

Received 10/25/93

Price \$ 5.00

GARDNER-DENVER®

13-8-509
2nd Edition
October, 1993

**ELECTRA-SCREW® STATIONARY
BASE-MOUNTED & TANK MOUNTED
COMPRESSORS**

MODELS

EBE_DF - 15 HP

EBE_EF - 20 HP

EBE_FF - 25 HP

EBE_GF - 30 HP

60 HZ

PARTS LIST


COOPER

Gardner-Denver
Industrial Machinery

**TOTAL PRODUCT SUPPORT - GARDNER-DENVER'S
CONTINUING COMMITMENT
TO YOUR AIR COMPRESSOR PERFORMANCE**

Commitment to total product support continues long after the purchase of your quality Gardner-Denver rotary screw compressor.

Gardner-Denver original parts incorporate years of experience and improvements in design, materials and quality assurance. Maintaining your compressor investment with Gardner-Denver parts will insure protection for the air compressor unit and long, dependable service life.

Your authorized Gardner-Denver compressor distributor maintains a complete stock of all common maintenance parts, factory approved AEON™ lubricants, and Gardner-Denver factory remanufactured and warranted exchange air ends. In addition, authorized distributor technicians are factory trained, and can provide complete diagnostic, compressor maintenance and repair services.

This manual is designed to assist you in maintaining high performance and receiving many years of dependable service you expect from your Gardner-Denver compressor.

**For Operating and Service Instructions See:
SERVICE MANUAL # 13-8-609**

TABLE OF CONTENTS

GROUP NAME	PAGE NUMBER
Ordering Instructions.....	2
Model Designations Matrix/Menu	3
Bare Compressor	4, 5
Warranty.....	6
Oil Seal Detail.....	7
Inlet Valve & Mounting Group	8
Air Filter & Mounting, Heavy Duty and Standard Duty	9
Oil Cooler Group	10
Oil Reservoir Group.....	11
Oil Filter.....	12
Oil Lines & Discharge Piping.....	13, 14
Air Receiver Group	15
Ejector Valve (Optional W/Air Receiver)	15
Discharge Piping Group (With Sepr/Trap - Base Mounted Units)	16
Discharge Piping Group (With Sepr/Trap - Tank Mounted Units)	17
Discharge Piping Group (Without Sepr/Trap - Tank Mounted Units).....	18
Control Piping.....	19, 20
Thermal Valve (Thermostatic Mixing)	21
Subtractive Pilot	22
Drive Groups (Sheaves, Belts, Fan, Relief Valve).....	23, 24
Control Starter (Component P/N Listing)	25, 26
Control Starter Box (By Hp & Voltage - Wiring Group).....	27
Overload Relay Heater Conversion Listing	28
Enclosure - Common Parts.....	29
Enclosure - TEFC Motor.....	30
Enclosure - Hardware & Mounting	31
Quiet Enclosure (Special Parts).....	32
Identification & Instruction Group.....	33, 34
Main Motor (Std. ODP/TEFC & HI-EFF. ODP)	35
Repair Kits, Spare Parts Kits, Touch-up Paint.....	36

**MAINTAIN COMPRESSOR RELIABILITY AND PERFORMANCE WITH
GENUINE GARDNER-DENVER AND JOY COMPRESSOR
PARTS AND SUPPORT SERVICES**

Gardner-Denver and Joy Compressor genuine parts, engineered to original tolerances, are designed for optimum dependability --- specifically for Gardner-Denver and Joy compressor systems. Design and material innovations are the result of years of experience with hundreds of different compressor applications. Reliability in materials and quality assurance are incorporated in our genuine replacement parts.

Your authorized Gardner-Denver and Joy Compressor distributor offers all the backup you'll need. A worldwide network of authorized distributors provides the finest product support in the air compressor industry.

Your local authorized distributor maintains a large inventory of genuine parts and he is backed up for emergency parts by direct access to the Gardner-Denver Industrial Machinery Master Distribution Center (MDC) in Memphis, Tennessee.

Your authorized distributor can support your Gardner-Denver or Joy air compressor with these ser-

vices:

1. Trained parts specialists to assist you in selecting the correct replacement parts.
2. Factory warranted new and remanufactured rotary screw air ends. Most popular model remanufactured air ends are maintained in stock at MDC for purchase on an exchange basic with liberal core credit available for the replacement unit.
3. A full line of factory tested AEON™ compressor lubricants specifically formulated for use in Gardner-Denver and Joy compressors.
4. Repair and maintenance kits designed with the necessary parts to simplify servicing your compressor.

Authorized distributor service technicians are factory-trained and skilled in compressor maintenance and repair. They are ready to respond and assist you by providing fast, expert maintenance and repair services.

For the location of your local authorized Gardner-Denver and Joy Air Compressor distributor refer to the yellow pages of your phone directory or contact:

**Distribution Center:
Gardner-Denver
Industrial Machinery Division
Master Distribution Center
5585 East Shelby Drive
Memphis, TN 38141
Phone: (901) 363-6100
Fax: (901) 363-1095**

**Factory:
Gardner-Denver
Industrial Machinery Division
1800 Gardner Expressway
Quincy, IL 62301
Phone: (217) 222-5400
Fax: (217) 223-5897**

**MODEL EBE - 15, 20, 25 & 30 HP AIR-COOLED
ELECTRA-SCREW® COMPRESSORS
MATRIX/MENU**

NOTICE TO CUSTOMER - To find the construction options for your compressor unit, FILL IN THE BALANCE OF LETTERS OR NUMBERS FROM YOUR UNIT NAMEPLATE.

E	B	E			F		9						
1	2	3	4	5	6	7	8	9	10	11	12	13	

COLUMN NUMBER:

Follow the line down and over from each space thus filled in to find the appropriate construction option with which your machine is equipped. The number "9" in any column space indicates "NOT APPLICABLE." The number "8" in any column space indicates SPECIAL DESIGN - REFER TO FACTORY ORDER TICKET.

COLUMNS 1, 2 & 3 - COMPRESSOR TYPE & SIZE

COLUMN 4 - TYPE OF CONSTRUCTION

- Q. Base Mounted
- R. Tank Mounted

COLUMN 5 - HORSEPOWER

- D. 15 HP
- E. 20 HP
- F. 25 HP
- G. 30 HP

COLUMN 6 - ENGINEERING SPECIFICATION

COLUMN 7 - PRESSURE & HZ

- A. 100 PSIG - 60 HZ (ALL)
- B. 125 PSIG - 60 HZ (ALL)
- C. 150 PSIG - 60 HZ (20-25-30 HP ONLY)
- D. 175 PSIG - 60 HZ (25-30 HP ONLY)

COLUMN 8 - AIR FILTER & MOUNTING

- A. Standard Filter
- B. Heavy Duty Filter

COLUMN 9 - CONTROL BOX STARTER (Per Voltage) (With/Without Main Mtr. Str.)

- | | |
|-------------------|-------------------------------|
| With Starter | Without Starter |
| A. 200 Volt - N12 | I. 200/230/460/575 Volt - N12 |
| B. 230 Volt - N12 | J. 200/230/460/575 Volt - N4 |
| C. 460 Volt - N12 | |
| D. 575 Volt - N12 | |
| E. 200 Volt - N4 | |
| F. 230 Volt - N4 | |
| G. 460 Volt - N4 | |
| H. 575 Volt - N4 | |

COLUMN 10 - ENCLOSURE

- A. Without Enclosure
- B. With Enclosure - ODP Motor
- C. With Enclosure - TEFC Motor
- D. Quiet Enclosure - ODP Motor Only

COLUMN 11 - AIR RECEIVER/BASE MOUNTING GROUPS

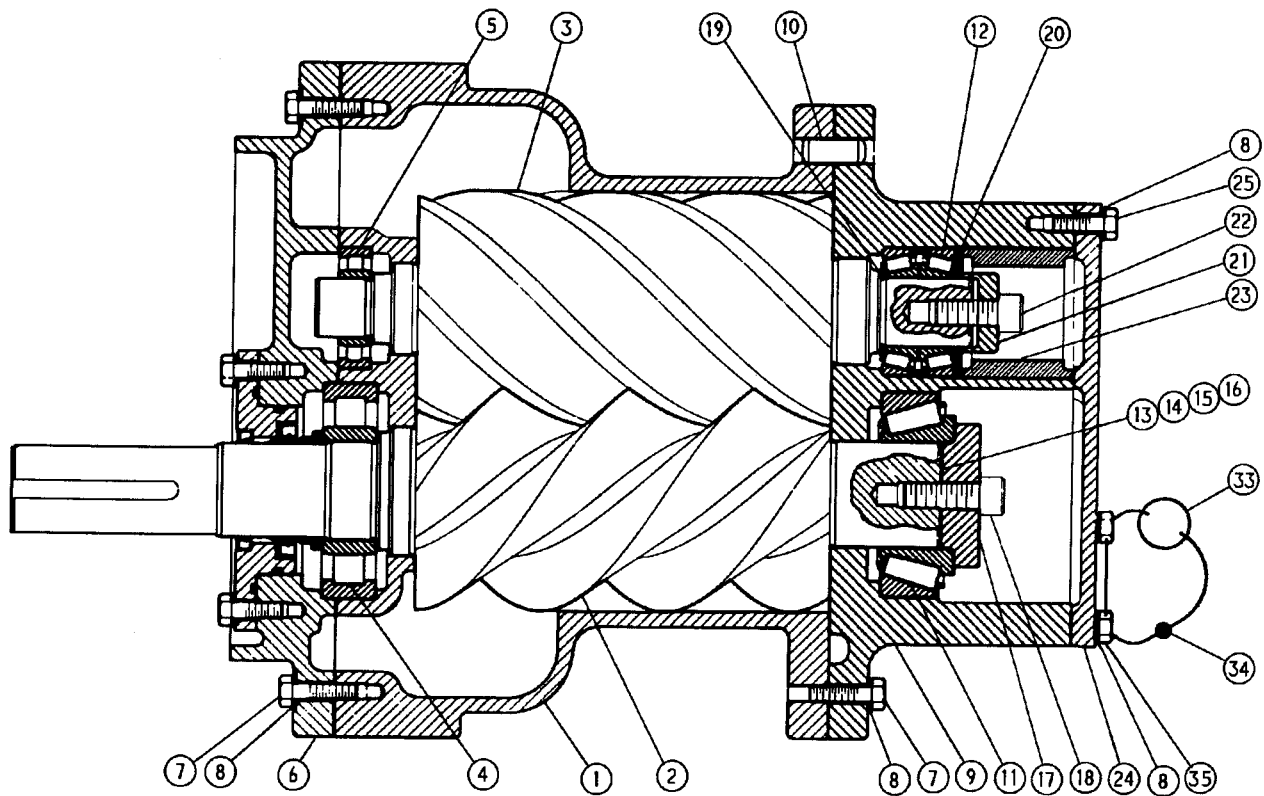
- | | |
|---|---|
| A. Base Mounted | F. 200 Gallon Tank W/O Cond. Drain Vlv |
| B. 120 Gallon Tank - W/O Cond. Drain Vlv | G. 200 Gallon Tank With Cond. Drain Vlv |
| C. 120 Gallon Tank - With Cond. Drain Vlv | H. 200 Gallon Mass. Tank W/O Cond. Drain Vlv |
| D. 120 Gallon Mass. Tank - W/O Cond. Drain Vlv | I. 200 Gallon Mass. Tank With Cond. Drain Vlv |
| E. 120 Gallon Mass. Tank - With Cond. Drain Vlv | |

COLUMN 12 - SEPARATOR/TRAP

- A. Base Mounted
- B. Tank Mounted
- C. Without Seperator/trap - (Tank Mounted Units Only)

COLUMN 13 - COMPRESSOR DRIVE MOTOR

- | | | |
|---------------------------|------------------------------------|--|
| A. 200 Volt - 60 HZ - ODP | E. 200 Volt - 60 HZ - ODP - HI EFF | I. 200 Volt - 60 HZ - TEFC |
| B. 230 Volt - 60 HZ - ODP | F. 230 Volt - 60 HZ - ODP - HI EFF | J. 230 Volt - 60 HZ - TEFC |
| C. 460 Volt - 60 HZ - ODP | G. 460 Volt - 60 HZ - ODP - HI EFF | K. 460 Volt - 60 HZ - TEFC |
| D. 575 Volt - 60 HZ - ODP | H. 575 Volt - 60 HZ - ODP - HI EFF | L. 575 Volt - 60 HZ - TEFC |
| | | M. Less Motor - ODP/TEFC
(Motor Base Only) (See Column 7) |



208SSE810
(Ref. Drawing)

Reference numbers and description are provided for your convenience. Refer to repair kit section for ordering field replacement components.

BARE COMPRESSOR

Ref. No.	Description	Ref. No.	Description
1	CYLINDER	* 14	SHIM
2	ROTOR	* 15	SHIM
3	ROTOR	* 16	SHIM
* 4	BEARING-ROLLER	17	PLATE-BEARING RET.
* 5	BEARING-ROLLER	18	SCREW-HEX HD
6	PLATE-BEARING COVER	* 19	SHIM
7	SCREW-HEX HD	* 20	SPRING-WAVE
8	WASHER-LOCK	21	PLATE-BEARING RET.
9	HOUSING-BEARING	22	SCREW-HEX HD
10	PIN-DOWEL	23	SPACER
* 11	BEARING-ROLLER	24	PLATE-BEARING COVER
* 12	BEARING-ROLLER	32	WASHER-LOCK
* 13	SHIM		

* Not Illustrated: Gasket Eliminator and Plug-Hex HD Pipe
Parts included in Periodic Overhaul Kit. Refer to page 36.

**BARE COMPRESSOR
REPAIR AND REPLACEMENT**

Gardner-Denver rotary screw compressor air ends are designed, manufactured, assembled, and tested to exacting standards. All new and factory remanufactured air ends are warranted by Gardner-Denver. Unauthorized disassembly or field repair may void the warranty and adversely effect operation.

**GARDNER-DENVER AIR END
EXCHANGE PROGRAM**

Should your air end require replacement, both new and factory remanufactured units are stocked by your authorized distributor or at the Gardner-Denver Industrial Machinery Distribution Center in Memphis, Tennessee.

Remanufactured and warranted compressor air end exchange units provide a quick, reliable, and economical method for field replacement. Your compressor may be returned to service promptly and the exchange core returned later for credit.

Air ends are remanufactured at the Gardner-Denver Industrial Machinery Remanufacturing Center in Indianapolis, Indiana, and factory warranted. The Indianapolis facility is staffed with experienced, skilled technicians dedicated to the remanufacture and repair of Gardner-Denver and Joy compressor units. The latest improvements are incorporated in the remanufacturing process. A new or rebuilt Gardner-Denver exchange compressor is your guarantee of optimum performance and reliability.

	REMANUFACTURED AIR END EXCHANGE (Furnished Without Inlet Valve)	NEW AIR END EXCHANGE (Furnished With Inlet Valve)
15 HP	SSEBBJX	SSEBBJ
20 HP	SSEBBJX	SSEBBJ
25 HP	SSEBBJX	SSEBBJ
30 HP	SSEBBJX	SSEBBJ



Gardner-Denver
Industrial Machinery

WARRANTY REMANUFACTURED PRODUCTS

- Reciprocating Compressors
- Rotary Screw Compressors
- Blowers

GENERAL PROVISIONS AND LIMITATIONS

Gardner-Denver Industrial Machinery Division (the "Company") warrants to each original retail purchaser ("Purchaser") of its products from the Company or its authorized distributor that such products are, at the time of delivery to the Purchaser, made with good material and workmanship. No warranty is made with respect to:

1. Any product which has been repaired or altered in such a way, in the Company's judgment, as to affect the product adversely.
2. Any product which has, in the Company's judgment, been subject to negligence, accident, improper storage, or improper installation or application.
3. Any product which has not been operated or maintained in accordance with the recommendations of the Company.
4. Components or accessories manufactured, warranted and serviced by others.

Claims for items described in (4) above should be submitted directly to the manufacturer.

WARRANTY PERIOD

The Company's obligation under this warranty is limited to repairing or, at its option, replacing, during normal business hours at an authorized service facility of the Company, any part which in its judgment proved not to be as warranted within the applicable Warranty Period as follows.

Remanufactured reciprocating compressors, rotary screw compressors, air ends and blowers, including all parts within, are warranted for 12 months from date of initial use or 15 months (blowers 18 months) from date of shipment to the first purchaser, whichever occurs first.

Any disassembly or partial disassembly of the blower or rotary screw air end, or failure to return the "unopened" air end per Company instructions, will be cause for denial of warranty.

LABOR TRANSPORTATION AND INSPECTION

The Company will provide labor, by Company representative or authorized service personnel, for repair or replacement of any product or part thereof which in the Company's judgment is proved not to be as warranted. Labor shall be limited to the amount specified in the Company's labor rate schedule.

Labor costs in excess of the Company rate schedules caused by, but not limited to, location or inaccessibility of the equipment, or labor provided by unauthorized service personnel is not provided by this warranty.

All costs of transportation of product or parts claimed not to be as warranted and, of repaired or replacement parts to or from such service facility shall be borne by the Purchaser. The Company may require the return of any part claimed not to be as warranted to one of its facilities as designated by Company, transportation prepaid by Purchaser, to establish a claim under this warranty.

Replacement parts provided under the terms of this warranty are warranted for the remainder of the Warranty Period of the product upon which installed to the same extent as if such parts were original components.

DISCLAIMER

THE FOREGOING WARRANTY IS EXCLUSIVE AND IT IS EXPRESSLY AGREED THAT, EXCEPT AS TO TITLE, THE COMPANY MAKES NO OTHER WARRANTIES, EXPRESSED, IMPLIED OR STATUTORY, INCLUDING ANY IMPLIED WARRANTY OF MERCHANTABILITY.

THE REMEDY PROVIDED UNDER THIS WARRANTY SHALL BE THE SOLE, EXCLUSIVE AND ONLY REMEDY AVAILABLE TO THE PURCHASER AND IN NO CASE SHALL THE COMPANY BE SUBJECT TO ANY OTHER OBLIGATIONS OR LIABILITIES. UNDER NO CIRCUMSTANCES SHALL THE COMPANY BE LIABLE FOR ANY SPECIAL, INDIRECT, INCIDENTAL OR CONSEQUENTIAL DAMAGES, EXPENSES, LOSSES OR DELAYS HOWSOEVER CAUSED.

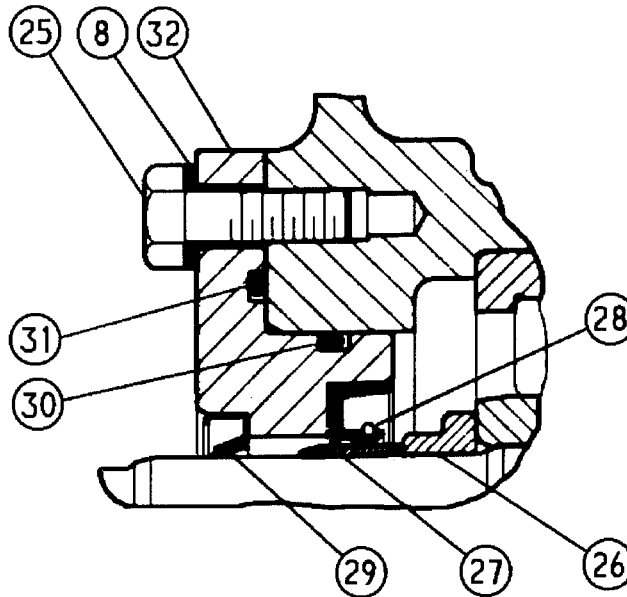
No statement, representation, agreement or understanding, oral or written, made by any agent, distributor, representative, or employee of the Company which is not contained in this Warranty will be binding upon the Company unless made in writing and executed by an officer of the Company.

This warranty shall not be effective as to any claim which is not presented within 30 days after the date upon which the product is claimed not to have been as warranted. Any action for breach of this warranty must be commenced within one year after the date upon which the cause of action occurred.

Any adjustment made pursuant to this warranty shall not be construed as an admission by the Company that any product was not as warranted.

BE-93 R 3/91

Order by Part Number and Description. Reference Numbers for your convenience only.



208SSE810
(Ref. Drawing)

ROTOR SHAFT
(REFERENCE)

OIL SEAL DETAIL

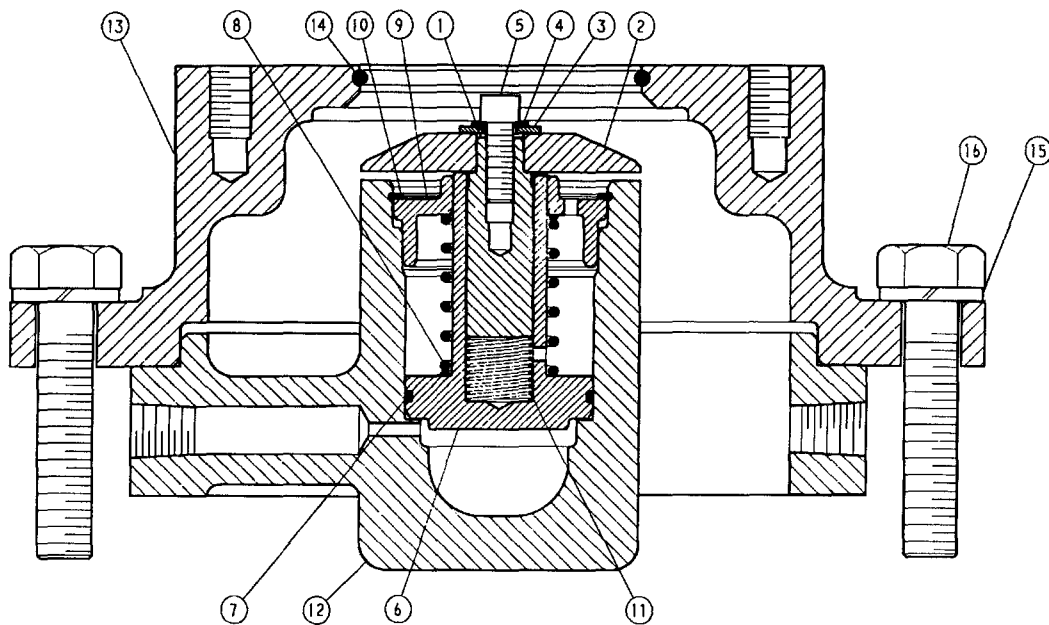
Ref. No.	Name of Part	Qty.	Part No.
8	WASHER-LOCK.....	55	95B2
25	SCREW-HEX CAP.....	18	75A10
26	SPACER-SHAFT.....	1	201SSE600
27	SLEEVE-WEAR.....	1	80M12
* 28	SEAL-OIL.....	1	60DD679
* 29	SEAL-OIL.....	1	60DD543
* 30	O-RING.....	1	54C210
* 31	O-RING.....	1	25BC380
32	HOUSING-SEAL.....	1	205SSE362

* Parts included in Periodic Overhaul Kit. Refer to page 36.

To replace oil seal, order kit 203SSE6013 consisting of reference number items 28, 29, 30 and 31.

Wear Sleeve Installation And Removal Kit # SSE81282.
(Includes wear sleeve puller and installation tool.)

Order by Part Number and Description. Reference Numbers for your convenience only.

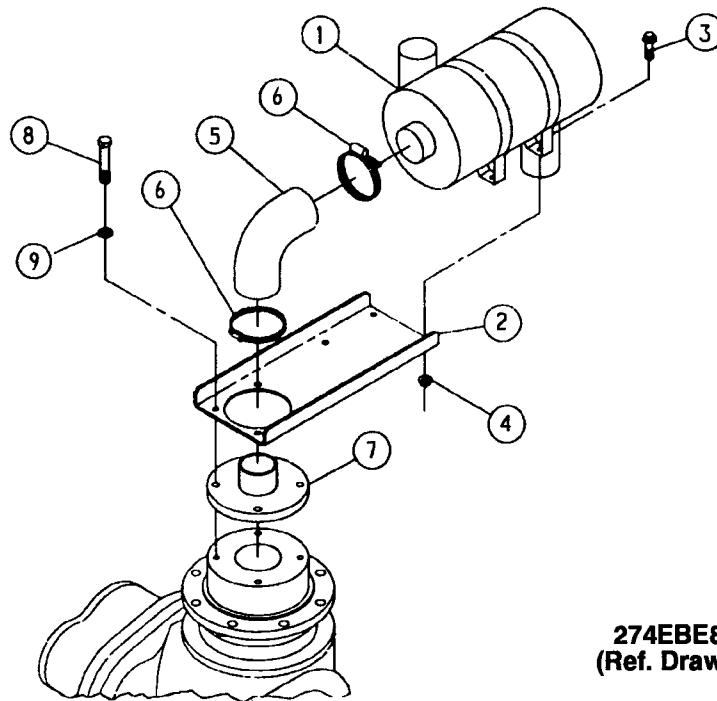


209 SSE810
(Ref. Drawing)

INLET VALVE

Ref. No.	Name of Part	Qty.	Part No.
1	GUIDE-VALVE	1	201SSE483
2	VALVE-INLET	1	202SSE044
3	WASHER-PLAIN.....	1	95A1
4	WASHER-LOCK	1	95H56
5	SCREW.....	1	75P7N
6	PISTON-INLET VALVE.....	1	202SSE043
7	O-RING.....	1	25BC440
8	SPRING	1	78H22
9	RETAINER	1	200SSE205
10	RING-RETAINING	1	74D87
11	SPRING	1	78W59
12	HOUSING-INLET	1	204SSE041
13	SEAT.....	1	203SSE256
14	RING (O-RING)	1	25AM15
15	WASHER-LOCK.....	8	95B5
16	SCREW-HEX HD.....	8	655EE100

Order by Part Number and Description. Reference Numbers for your convenience only.

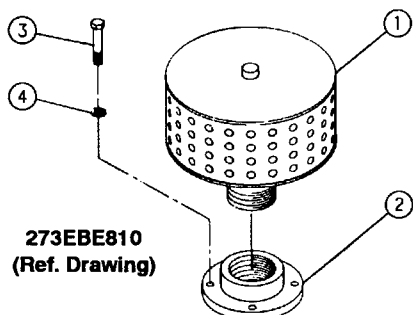


274EBE810
(Ref. Drawing)

HEAVY DUTY AIR FILTER AND MOUNTING

Ref. No.	Name of Part	Qty.	Part No.
1	FILTER-AIR.....	1	5L220
2	BRACKET-FILTER.....	1	202EBE389
3	SCREW-FLANGED.....	4	75LM50
4	NUT-FLANGED.....	4	50AW4
5	HOSE-MOLDED.....	1	29Z97
6	CLAMP-HOSE.....	2	29B32
7	ADAPTOR-FILTER.....	1	201EBE070
8	SCREW-HEX HD.....	4	655ED080
9	LOCKWASHER.....	4	95B3
*	ELEMENT (REPAIR).....	1	2116150

STANDARD DUTY AIR FILTER (OPTIONAL)

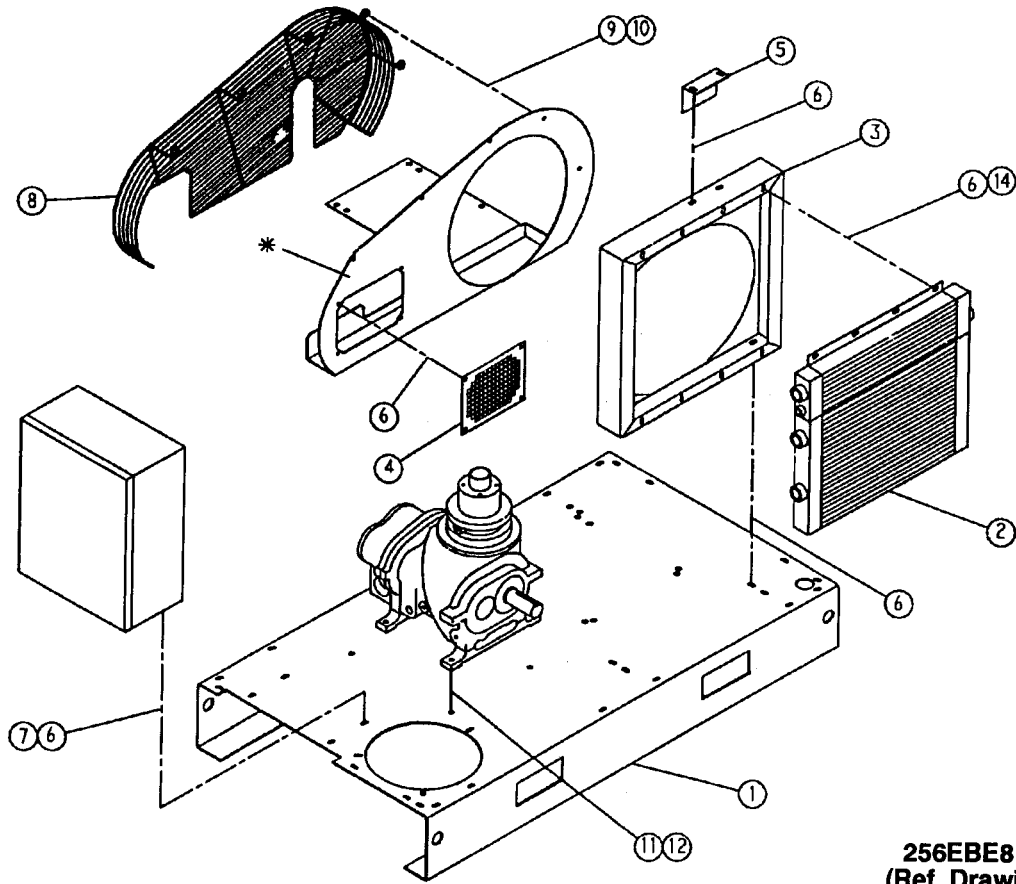


273EBE810
(Ref. Drawing)

Ref. No.	Name of Part	Qty.	Part No.
1	FILTER-AIR.....	1	5L225
2	ADAPTOR-FILTER.....	1	200EBE070
3	SCREW-HEX HD.....	4	655ED080
4	LOCKWASHER.....	4	95B3
*	ELEMENT (REPAIR).....	1	2116273

* Not shown on Heavy Duty or Standard Duty illustrations.

Order by Part Number and Description. Reference Numbers for your convenience only.

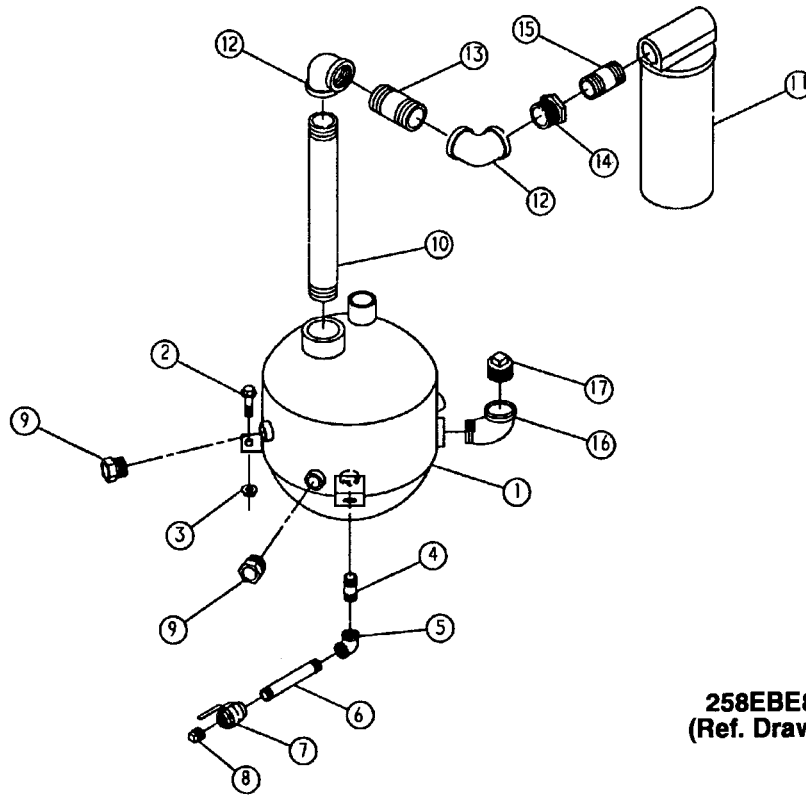


256EBE810
(Ref. Drawing)

OIL COOLER GROUP

Ref. No.	Name of Part	Qty.	15/20 H.P. Part No.	25/30 H.P. Part No.
1	BASE	1	203EBE285	203EBE285
2	COOLER-OIL	1	201EBE201	201EBE201
3	BAFFLE	1	200EBE840	200EBE840
4	PLATE-INSPECTION	1	200EBE052	200EBE052
5	BRACKET	1	200EBE142	200EBE142
6	SCREW-FLANGED	22	75LM51	75LM51
7	NUT-FLANGED	4	50AW5	50AW5
8	GUARD-FAN	1	203EBE393	203EBE393
9	SCREW-FLANGED	5	75LM150	75LM150
10	WASHER-PLAIN	10	95A3	95A3
11	SCREW-HEX HD	4	655EE080	655EE080
12	WASHER-LOCK	4	95B5	95B5
14	WASHER-PLAIN	8	95A3	95A3
*	ORIFICE	1	206EBE814	207EBE814

Order by Part Number and Description. Reference Numbers for your convenience only.



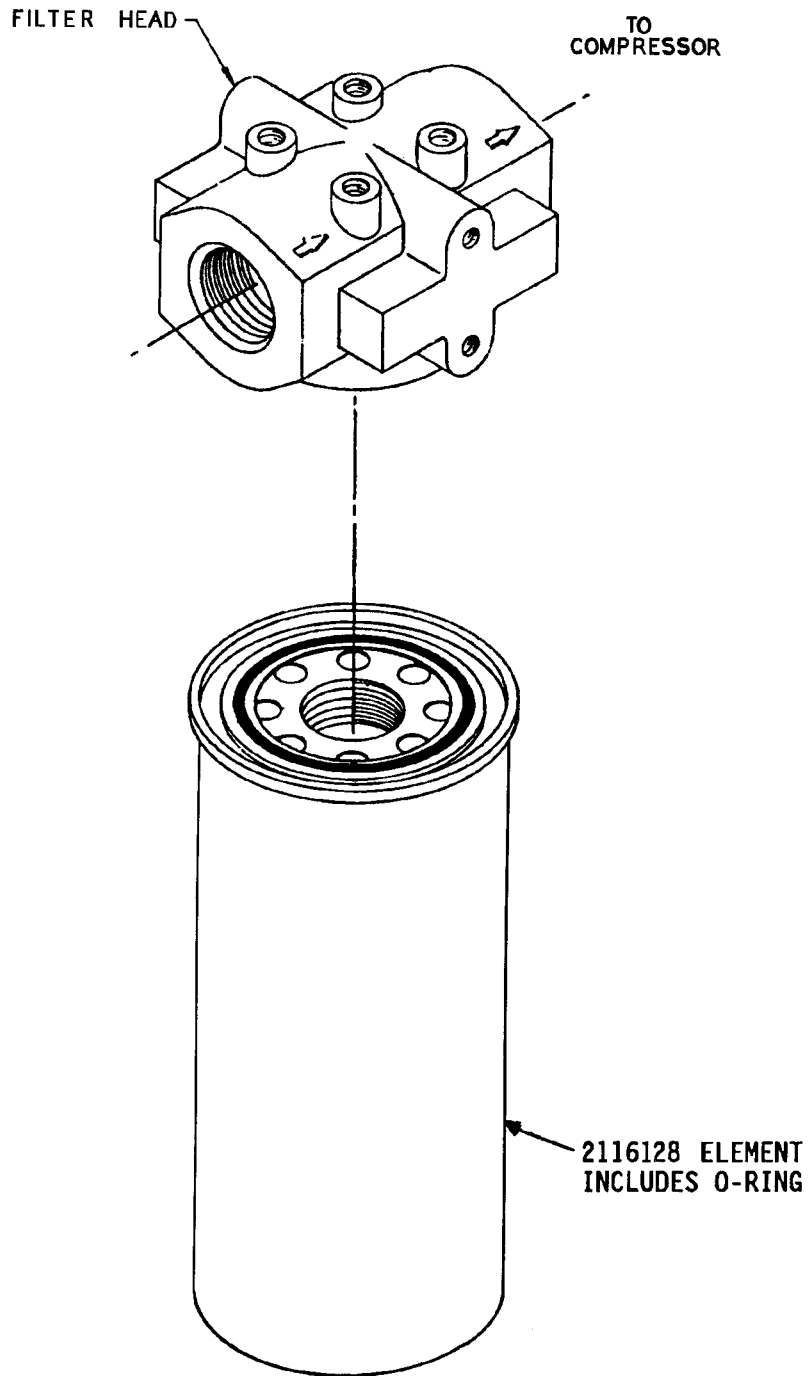
258EBE810
(Ref. Drawing)

OIL RESERVOIR

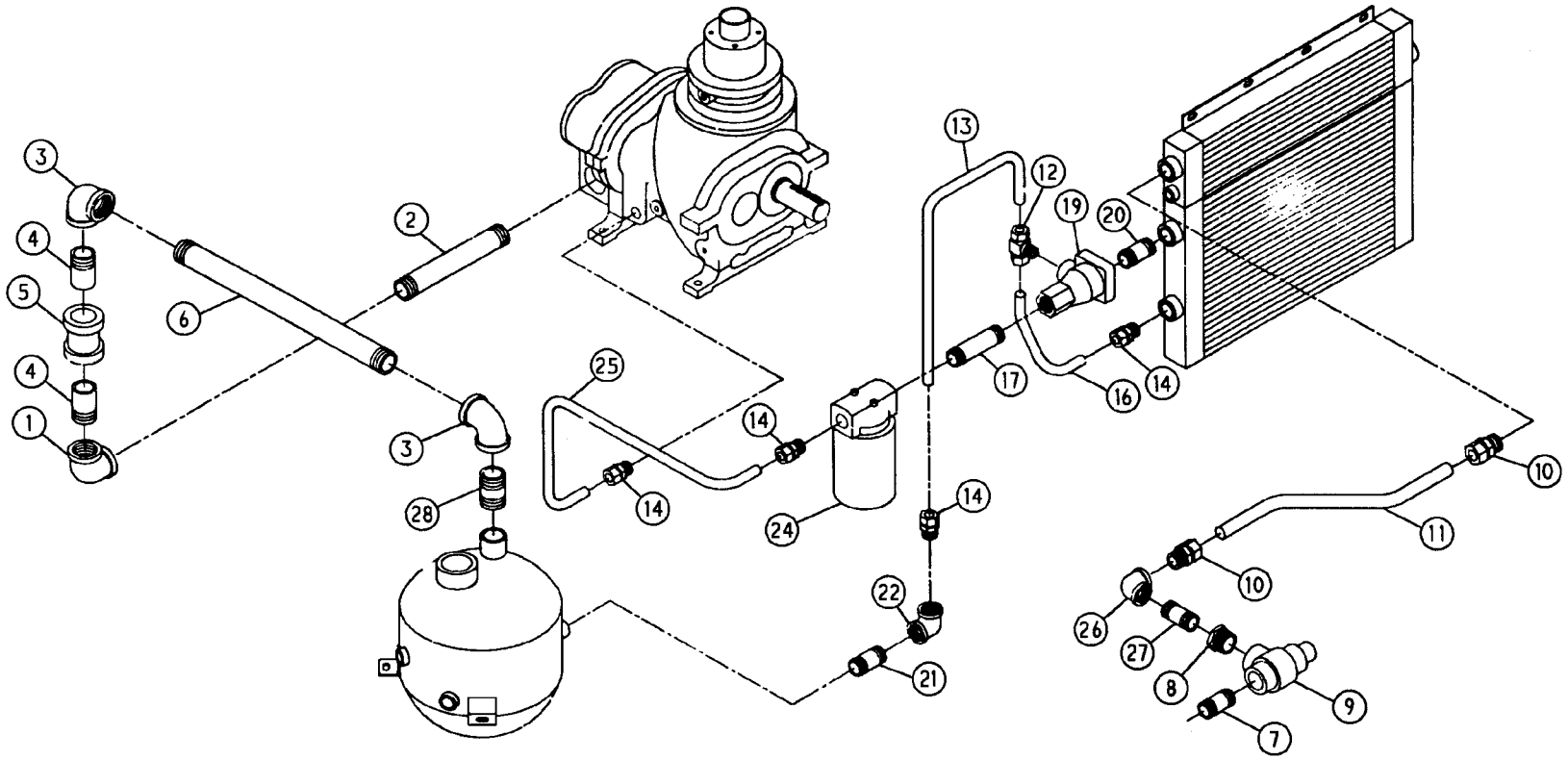
Ref. No.	Name of Part	Qty.	Part No.
1	RESERVOIR-OIL.....	1	203EBE037
2	SCREW-FLANGED	3	75LM51
3	NUT-FLANGED	3	50AW5
4	NIPPLE-PIPE.....	1	63F1G
5	ELBOW-PIPE	1	64C4G
6	NIPPLE-PIPE.....	1	63F6G
7	VALVE-BALL.....	1	90AR360
8	PLUG-SQ HD	1	64AA7
9	GAUGE (LIQUID LEVEL)	2	00914483 0012
10	NIPPLE-PIPE.....	1	63K13G
* 11	SEPARATOR-OIL.....	1	55B57
12	ELBOW-PIPE	2	64C8G
13	NIPPLE-PIPE.....	1	63K18G
14	BUSHING-PIPE.....	1	64E98
15	NIPPLE-PIPE.....	1	63J15G
16	ELBOW-PIPE ST	1	64D7G
17	PLUG-SQ HD	1	64A26

* For Replacement Element and O-Ring order 2116717. For Replacement Head order 2116716.

OIL FILTER - 26C27



OIL LINES & DISCHARGE PIPING



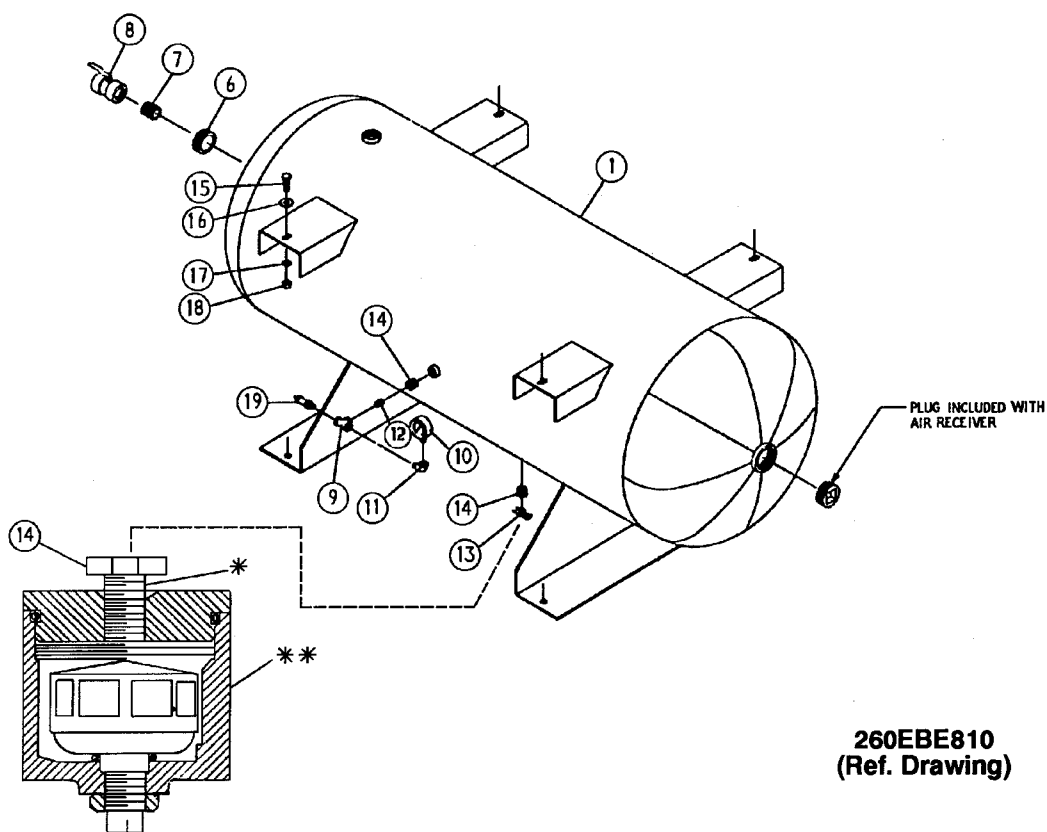
267EBE810
(Ref. Drawing)

Order by Part Number and Description. Reference Numbers for your convenience only.

Ref. No.	Name of Part	Qty.	Part No.	Ref. No.	Name of Part	Qty.	Part No.
1	ELBOW-PIPE.....	1	64S30G	14	CONNECTOR-TUBE.....	4	86N150
2	NIPPLE-PIPE.....	1	63L5G	16	TUBE-FORMED	1	224EBE857
3	ELBOW-PIPE.....	2	64C8G	17	NIPPLE-PIPE.....	1	63G6G
4	NIPPLE-PIPE.....	2	63AJ24X40G				
5	COUPLING-FLEX.....	1	64EB26	19	VALVE-THERMAL	1	90AR900
6	NIPPLE-PIPE.....	1	63N24X130G	20	NIPPLE-PIPE.....	1	63G3G
7	NIPPLE-PIPE.....	1	63J15G	21	NIPPLE-PIPE.....	2	63G1G
8	BUSHING-PIPE.....	1	64E97G	22	TEE-PIPE.....	1	64G7G
9	VALVE-M/PRESS	1	200EDE527	24	FILTER-OIL.....	1	26C27
10	CONNECTOR-TUBE.....	2	86N120	25	TUBE-FORMED	1	226EBE857
11	TUBE-FORMED.....	1	228EBE857	26	ELBOW-PIPE	1	64C6G
12	ELBOW-TUBE	2	86N151	27	NIPPLE-PIPE.....	1	63H1G
13	TUBE-FORMED.....	1	255EBE857	28	NIPPLE-PIPE.....	1	63K18G

FOR REPLACEMENT ELEMENT (OIL FILTER) ORDER 2116128 - SEE PAGE 12; (THERM VALVE) - SEE PAGE 21.

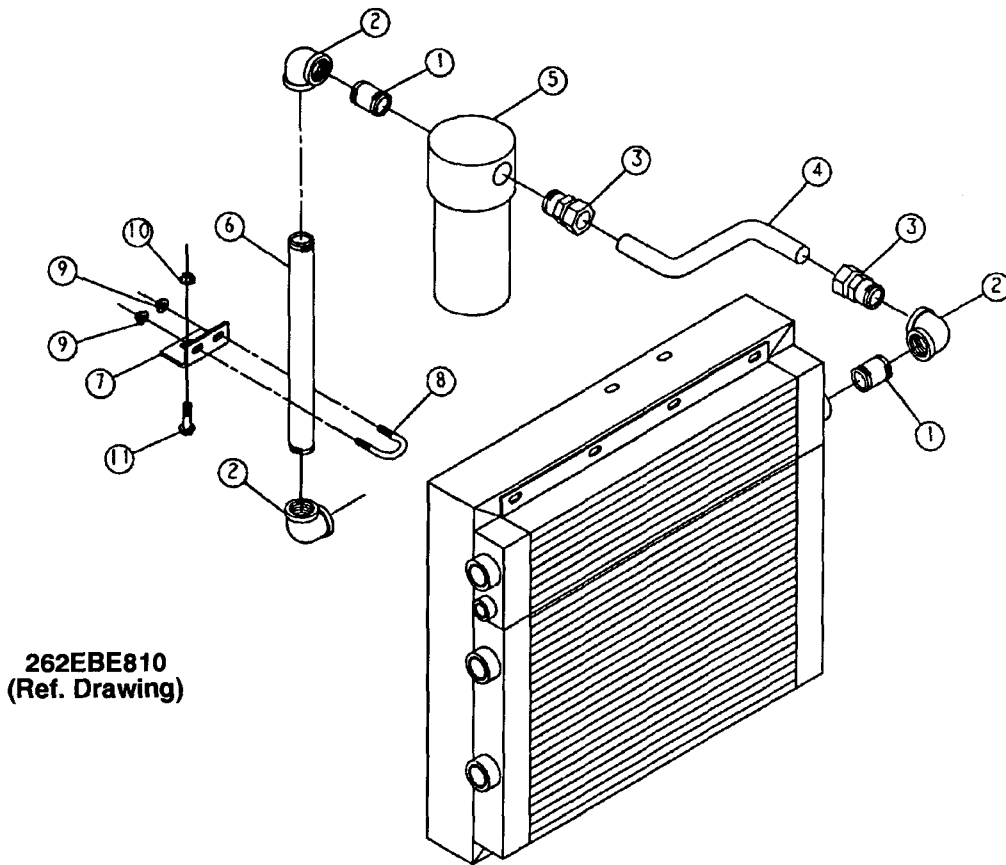
Order by Part Number and Description. Reference Numbers for your convenience only.



AIR RECEIVER GROUP

Ref. No.	Name of Part	Qty.	Part No.
1	RECEIVER-AIR	1	
	120 GALLON		200EJB645
	200 GALLON		201EJB645
6	BUSHING-PIPE	1	64E11
7	NIPPLE-PIPE	1	63H1G
8	VALVE-BALL	1	90AR362
9	TEE-PIPE	1	64G3G
10	GAUGE-AIR PRESSURE	1	27A114
11	ELBOW-PIPE ST	1	64D2G
12	NIPPLE-PIPE	1	63D1G
13	COCK	1	90C12
14	BUSHING-PIPE	2	64E2G
15	SCREW-HEX HD	4	655EE060
16	WASHER-PLAIN	8	95A5
17	WASHER-LOCK	4	95B5
18	NUT-HEX	4	50B5
19	VALVE-PRESS/RELIEF	1	90AR657
*	NIPPLE PIPE (OPTIONAL)	1	63F21G
**	EJECTOR VALVE (OPTIONAL)	1	90AR319

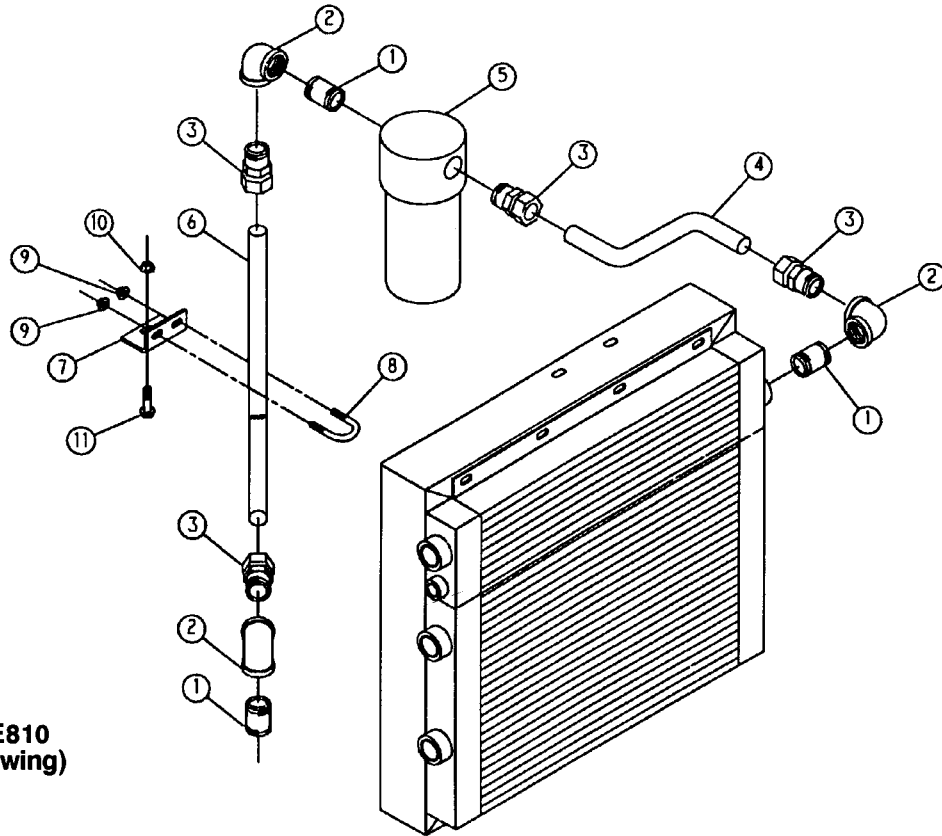
Order by Part Number and Description. Reference Numbers for your convenience only.



DISCHARGE PIPING - BASE MOUNTED UNITS

Ref. No.	Name of Part	Qty.	Part No.
1	NIPPLE-PIPE	2	63H1G
2	ELBOW-PIPE	3	64C6G
3	CONNECTOR-TUBE	2	86N120
4	TUBE-FORMED	1	230EBE857
5	SEPARATOR-INT. TRAP	1	83C78
6	NIPPLE-PIPE	1	63N16X134G
7	BRACKET	1	202EJB142
8	U-BOLT	1	15U59
9	NUT-FLANGED	2	50AW3
10	NUT-FLANGED	1	50AW5
11	SCREW-FLANGED	1	75LM51

Order by Part Number and Description. Reference Numbers for your convenience only.

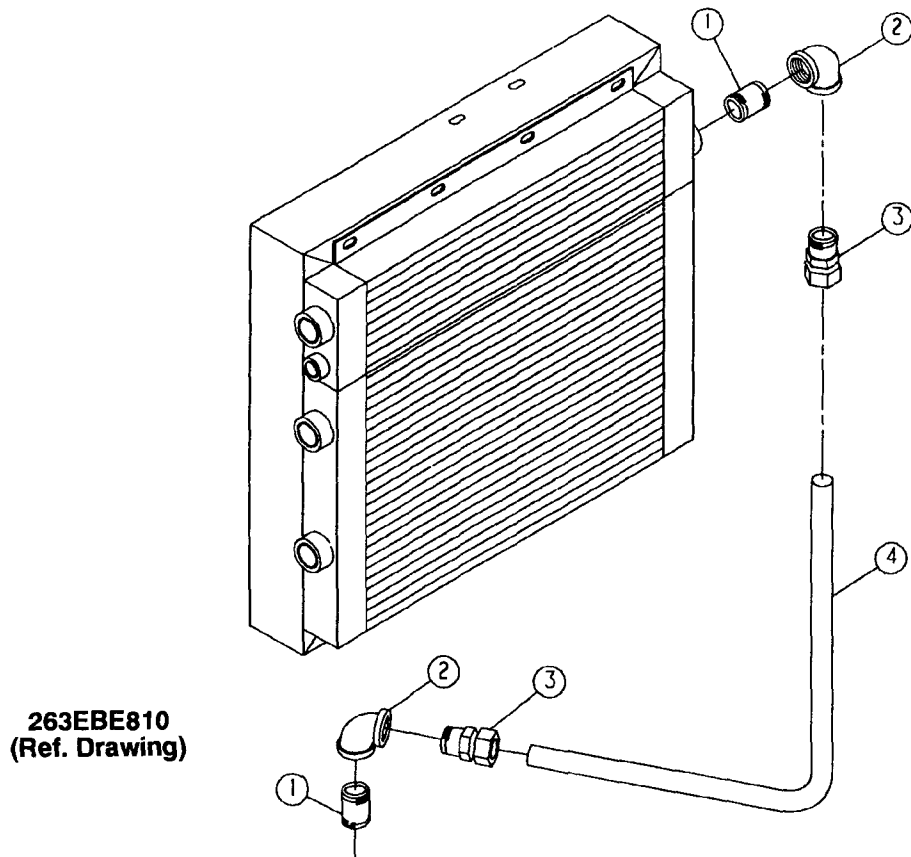


261EBE810
(Ref. Drawing)

DISCHARGE PIPING - TANK MOUNTED UNITS

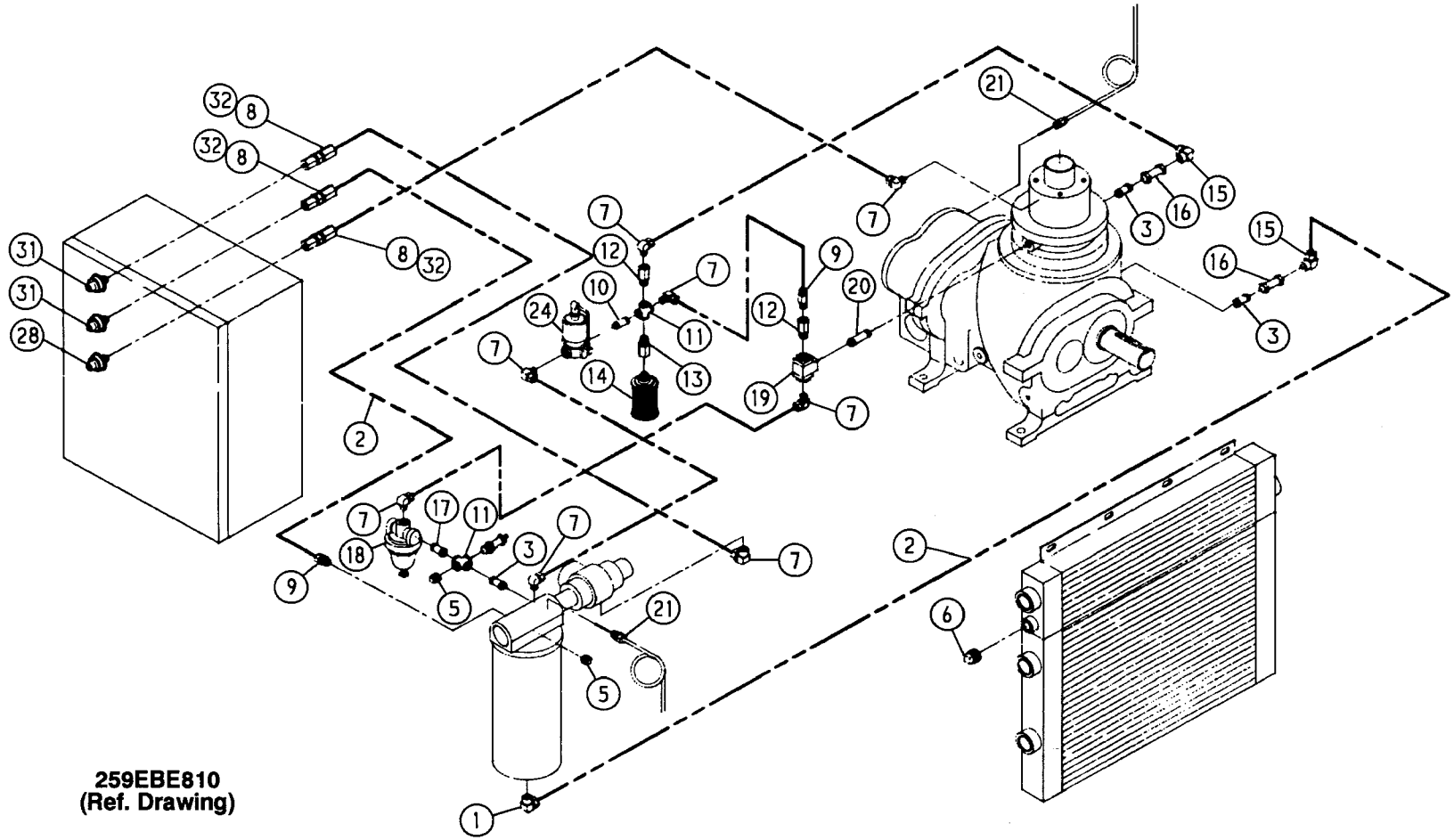
Ref. No.	Name of Part	Qty.	Part No.
1	NIPPLE-PIPE.....	3	63H1G
2	ELBOW-PIPE.....	3	64C6G
3	CONNECTOR-TUBE.....	4	86N120
4	TUBE-FORMED.....	1	230EBE857
5	SEPARATOR-INT. TRAP.....	1	83C78
6	TUBE-FORMED.....	1	229EBE857
7	BRACKET.....	1	202EJB142
8	U-BOLT.....	1	15U59
9	NUT-FLANGED.....	2	50AW3
10	NUT-FLANGED.....	1	50AW5
11	SCREW-FLANGED.....	1	75LM51

Order by Part Number and Description. Reference Numbers for your convenience only.



DISCHARGE PIPING - TANK MOUNTED UNITS
(WITHOUT SEPARATOR-TRAP)

Ref. No.	Name of Part	Qty.	Part No.
1	NIPPLE-PIPE.....	2	63H1G
2	ELBOW-PIPE.....	2	64C6G
3	CONNECTOR-TUBE.....	2	86N120
4	TUBE-FORMED.....	1	223EBE857



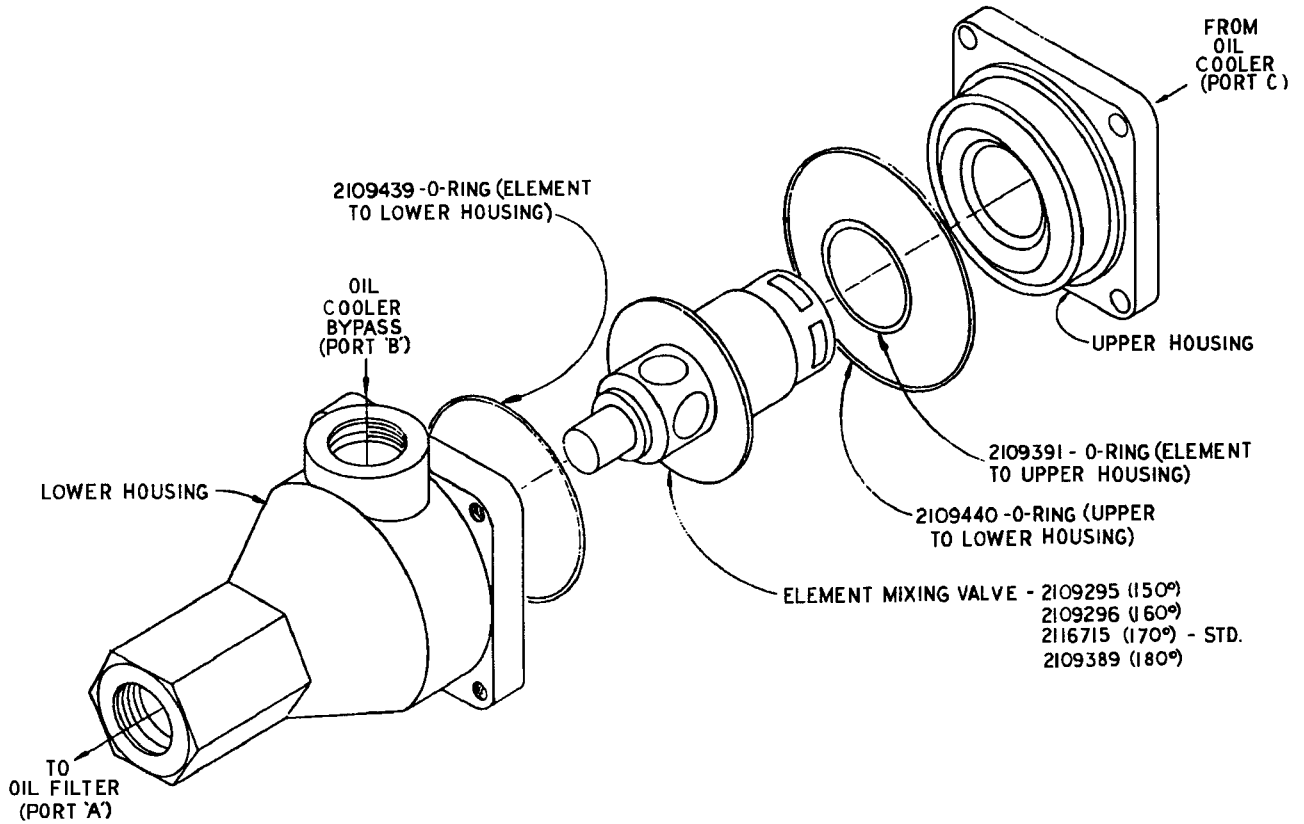
259EBE810
(Ref. Drawing)

Order by Part Number and Description. Reference Numbers for your convenience only.

Ref. No.	Name of Part	Qty.	Part No.	Ref. No.	Name of Part	Qty.	Part No.
1	ELBOW-TUBE.....	1	86E59	17	NIPPLE-PIPE.....	1	63D3G
2	TUBE.....	30 FT.	85K3	18	VALVE-SUB/PILOT.....	1	2009398
3	NIPPLE-PIPE.....	3	63D3G	19	VALVE.....	1	90AR107
5	PLUG-SQ HD PIPE.....	2	64AA5	20	NIPPLE-PIPE.....	1	63D3G
6	PLUG-SQ HD PIPE.....	1	64AA7	21	THERMISTOR PROBE.....	2	21D264
7	ELBOW-TUBE.....	7	86E60	24	VALVE-SOLENOID.....	1	91B77
8	CONNECTOR.....	3	86N218	28	SWITCH-VACUUM.....	1	88H195
9	CONNECTOR-TUBE.....	3	86E4	31	TRANSDUCER-PRESSURE ..	2	88H198
10	NIPPLE-PIPE.....	1	63D1G	*	CONNECTOR-CABLE.....	1	00600704 0582
11	CROSS-PIPE.....	2	64K1G	*	SEAL-PLUG.....	1	24A415
12	ORIFICE.....	2	200SSQ814	*	O-RING.....	1	24A383
13	ORIFICE.....	1	200SSQ814	*	NIPPLE-CHASE.....	1	24A437
14	MUFFLER.....	1	43E4	*	LOCKNUT-CONDUIT.....	1	24A77
15	ELBOW-TUBE.....	2	86E60	*	WIRE.....	8 FT.	97H2R
16	VALVE-CHECK.....	2	90J140	*	LUG TERMINAL.....	2	24A476

* Not shown.

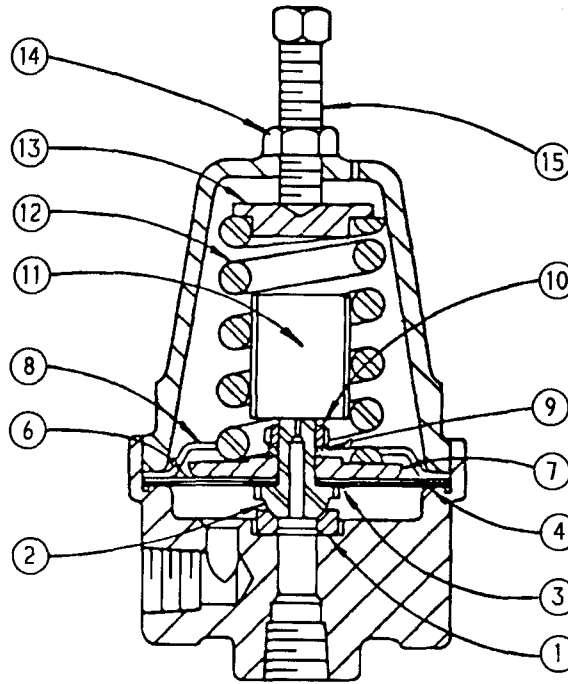
**THERMAL VALVE
(Thermostatic Mixing)**



90AR900 ASM VALVE - THERMAL (ALUMINUM HOUSING) (170°)

C76528

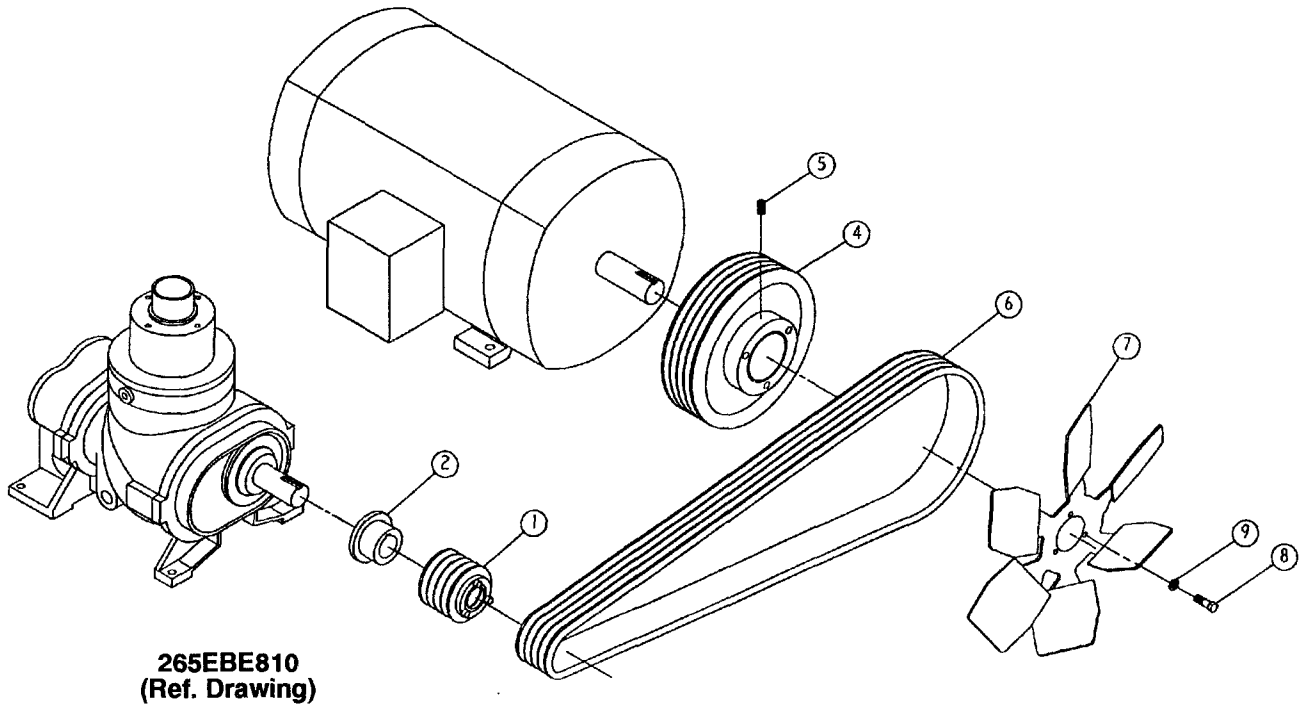
Order by Part Number and Description. Reference Numbers for your convenience only.



SUBTRACTIVE PILOT VALVE

Ref. No.	Name of Part	Qty	Part No.
	VALVE-SUBTRACTIVE PILOT, Incl. Ref. No. 1 thru 15.....		2009398
1	RING-SEAT.....	1	2008021
2	DISC-SEAT.....	1	2010080
3	GASKET-DURABLA.....	1	2008019
4	GASKET-DURABLA.....	1	2008017
6	DIAPHRAGM.....	5	2008018
7	PLATE-PRESSURE.....	1	2008015
8	STOP-DIAPHRAGM.....	1	2008016
9	WASHER-LOCK.....	1	95B1
10	NUT-PRESSURE PLATE.....	1	2008888
11	DAMPER.....	1	2008711
12	SPRING-PRESSURE.....	1	2008014
13	BUTTON-SPRING.....	1	2008891
14	LOCKNUT.....	1	50Y2
15	SCREW-PRESSURE.....	1	2008952

NOTE: It is necessary to replace some parts in groups to insure satisfactory repair. When replacing diaphragm, also replace both diaphragm and seat gaskets. When replacing seat disc or seat ring, replace also the mating seat ring or disc and the seat disc gasket.



Ref. No.	Name of Part	Qty	Part No. Per Pressure		
			100	125	150
	15 H.P. DRIVE GP.....		200EBE4004	201EBE4004	
1	SHEAVE, COMPR.....	1	73M43V65	73M43V80	
2	HUB-BUSHING.....	1	22F28SK	*	
4	SHEAVE, MTR.....	1	208EBE099	*	
5	SO HD SET SCREW.....	2	76F65	*	
6	BELT SET.....	1	13AG6004	*	
7	FAN.....	1	203EBE701	*	
8	SCREW.....	3	655ED030	*	
9	LOCKWASHER.....	3	95B3	*	
10	RELIEF VALVE.....	1	90AR661	90AR662	

Ref. No.	Name of Part	Qty	Part No. Per Pressure		
			100	125	150
	20 H.P. DRIVE GP.....		202EBE4004	203EBE4004	204EBE4004
1	SHEAVE, COMPR.....	1	73M43V56	73M43V80	73M43V65
2	HUB-BUSHING.....	1	22F28SDS	22F28SK	22F28SK
4	SHEAVE, MTR.....	1	201EBE099	205EBE099	202EBE099
5	SO HD SET SCREW.....	2	76F65	*	*
6	BELT SET.....	1	13AG6304	13AG6704	13AG6004
7	FAN.....	1	203EBE701	*	*
8	SCREW.....	3	655ED030	*	*
9	LOCKWASHER.....	3	95B3	*	*
10	RELIEF VALVE.....	1	90AR661	90AR662	90AR663

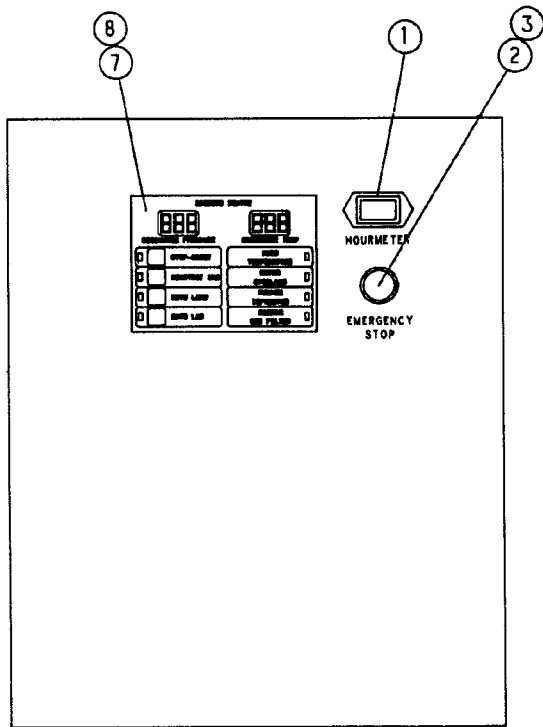
* P/N SAME AS 100 PSI UNIT - PER H.P. FAMILY

** SEE NOTE ON PAGE 24 FOR 25 & 30 HP, 100 PSIG UNITS (FOR RELIEF VALVE)

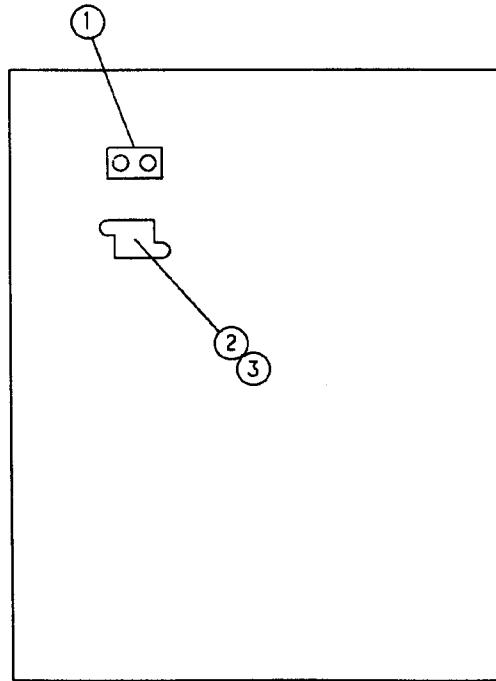
Ref. No.	Name of Part	Qty	Part No. Per Pressure			
			100	125	150	175
	25 H.P. DRIVE GP.		205EBE4004	206EBE4004	207EBE4004	208EBE4004
1	SHEAVE, COMPR.....	1	73M43V65	73M43V80	73M43V80	*
2	HUB-BUSHING.....	1	22F28SK	*	*	*
4	SHEAVE, MTR	1	203EBE099	204EBE099	207EBE099	*
5	SO HD SET SCREW.....	2	76F65	*	*	*
6	BELT SET.....	1	13AG6704	*	*	*
7	FAN.....	1	202EBE701	*	*	*
8	SCREW.....	3	655ED030	*	*	*
9	LOCKWASHER.....	3	95B3	*	*	*
10	RELIEF VALVE.....	1	**	90AR662	90AR663	90AR657

Ref. No.	Name of Part	Qty	Part No. Per Pressure			
			100	125	150	175
	30 H.P. DRIVE GP.		209EBE4004	210EBE4004	211EBE4004	212EBE4004
1	SHEAVE, COMPR.....	1	73M43V56	73M43V65	73M43V65	73M43V65
2	HUB-BUSHING.....	1	22F28SDS	22F28SK	22F28SK	22F28SK
4	SHEAVE, MTR	1	203EBE099	*	207EBE099	206EBE099
5	SO HD SET SCREW.....	2	76F65	*	*	*
6	BELT SET.....	1	13AG6304	13AG6704	*	*
7	FAN.....	1	202EBE701	*	*	*
8	SCREW.....	3	655ED030	*	*	*
9	LOCKWASHER.....	3	95B3	*	*	*
10	RELIEF VALVE.....	1	**	90AR662	90AR663	90AR657

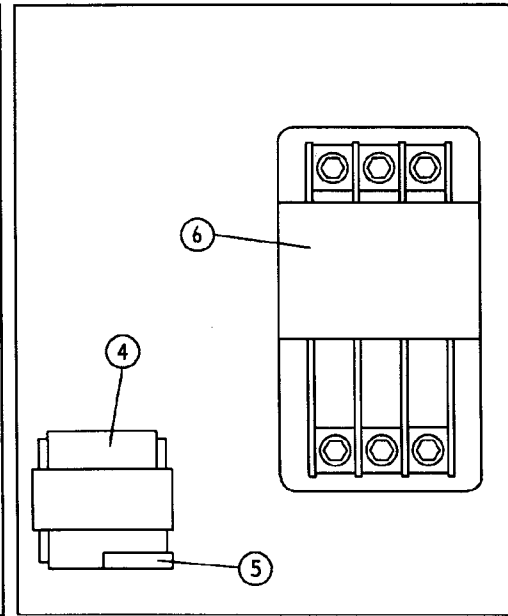
* P/N SAME AS 100 PSI UNIT - PER H.P. FAMILY
 ** (2) 90G223 RELIEF VALVES REQUIRED



FRONT VIEW - (DOOR)



REAR VIEW - COVER (DOOR)



FRONT VIEW - CONTROL CABINET

CONTROL PANEL GROUP

Ref. No.	NAME OF PART	QTY	PART NO.
1	METER-HOUR (60 HZ).....	1	24CA2895
2	OPERATOR 22MM PUSH-PULL E-STOP.....	1	24CA2907
3	CONTACT BLOCK E22B1 SPNC.....	1	24CA2908
4	TRANSFORMER .050KVA (50VA) 24V SECONDARY 208/230/460/575 VOLT.....	1	2116694
4	TRANSFORMER .100KVA (100VA) 24V SECONDARY 208/230/460/575 VOLT.....	1	2116695
4	TRANSFORMER .150KVA (150VA) 24V SECONDARY 208/230/460/575 VOLT.....	1	2116696
5	SECONDARY FUSES		
	FNM3.....	1	24CA3725
	FNM6.....	1	24CA3726
	FNM8.....	1	24CA3727
6	STARTER, COMPR MTR-SIZE F (LESS N.O. AUX CONTACT).....	1	24CA2909
	RELAY, 3 POLE, 24V, 60 HZ.....	1	24CA2906
	COIL, 24V, 60 HZ.....	1	2116394
	RELAY, 3 POLE, O.L., 32 AMP..... (15/20 HP, 460V - 15/20/25 HP - 575V)	1	24CA2501
6	STARTER, COMPR MTR-SIZE K (LESS N.O. AUX CONTACT).....	1	24CA2910
	CONTACT, KIT - 3 POLE.....	1	2116383
	COIL, 24V, 60 HZ.....	1	2116395
	RELAY, 3 POLE, O.L., 75 AMP..... (15/20 HP-200V, 15/20/25 HP-230V, 25/30 HP-460V, 30 HP-575V)	1	24CA2611
6	STARTER, COMPR MTR-SIZE M.....	1	24CA2911
	CONTACT, KIT - 3 POLE.....	1	2116384
	COIL, 24V, 60 HZ.....	1	2116396
	RELAY, 3 POLE, O.L. - 100 AMP..... (25/30 HP - 200V, 30 HP - 230V)	1	24CA2905
7	KEYPAD.....	1	200EBE375
8	CONTROL BOARD.....	1	200EBE1173
+	FUSE, CONTROL BOARD (Bussman AGC1-1 Amp).....	1	24CA2932
	DECAL, CONTROL BOARD FUSE.....	1	277AUX077
+	DECAL, FUSE (SECONDARY)		
	FNM3.....	1	297AUX077
	FNM6.....	1	298AUX077
	FNM8.....	1	299AUX077

**CONTROL/STARTER BOX
(COL. CODE 9 - W/O.L. HTRS & FUSETRONS)**

W/MAIN MTR STARTER

H.P.	VOLTAGE	CONTROL/STARTER BOX NEMA 12	CONTROL/STARTER BOX NEMA 4	* WIRING HARNESS GP	O.L. HEATERS (3)	PRIMARY FUSE (2)	PRIMARY FUSE DECAL	SECONDARY FUSE (1)	SECONDARY FUSE DECAL
15	200	293EBE466	297EBE466	200EBE4014	Refer To	24CA3722	294AUX077	24CA3726	298AUX077
15	230	293EBE466	297EBE466	201EBE4014	Conversion	24CA2781	260AUX077	24CA3726	298AUX077
15	460	292EBE466	296EBE466	202EBE4014	Listing On	24CA2897	272AUX077	24CA3725	297AUX077
15	575	292EBE466	296EBE466	203EBE4014	Page 27	24CA3718	290AUX077	24CA3725	297AUX077
20	200	293EBE466	297EBE466	204EBE4014		24CA3722	294AUX077	24CA3726	298AUX077
20	230	293EBE466	297EBE466	205EBE4014		24CA2781	260AUX077	24CA3726	298AUX077
20	460	292EBE466	296EBE466	206EBE4014		24CA2897	272AUX077	24CA3725	297AUX077
20	575	292EBE466	296EBE466	207EBE4014		24CA3718	290AUX077	24CA3725	297AUX077
25	200	294EBE466	298EBE466	208EBE4014		24CA3723	295AUX077	24CA3727	299AUX077
25	230	294EBE466	298EBE466	209EBE4014		24CA2783	262AUX077	24CA3727	299AUX077
25	460	293EBE466	297EBE466	210EBE4014		24CA2779	258AUX077	24CA3726	298AUX077
25	575	293EBE466	296EBE466	211EBE4014		24CA3718	290AUX077	24CA3725	297AUX077
30	200	294EBE466	298EBE466	212EBE4014		24CA3723	295AUX077	24CA3727	299AUX077
30	230	294EBE466	298EBE466	213EBE4014		24CA2783	262AUX077	24CA3727	299AUX077
30	460	293EBE466	297EBE466	214EBE4014		24CA2779	258AUX077	24CA3726	298AUX077
30	575	293EBE466	297EBE466	215EBE4014		24CA2898	273AUX077	24CA3726	298AUX077

* INCLUDES O.L. HEATERS (3) & FUSETRONS (2) AS INDICATED; ALSO WIRING COMPONENTS FOR BOX TO MTR.

W/O MAIN MOTOR STARTER

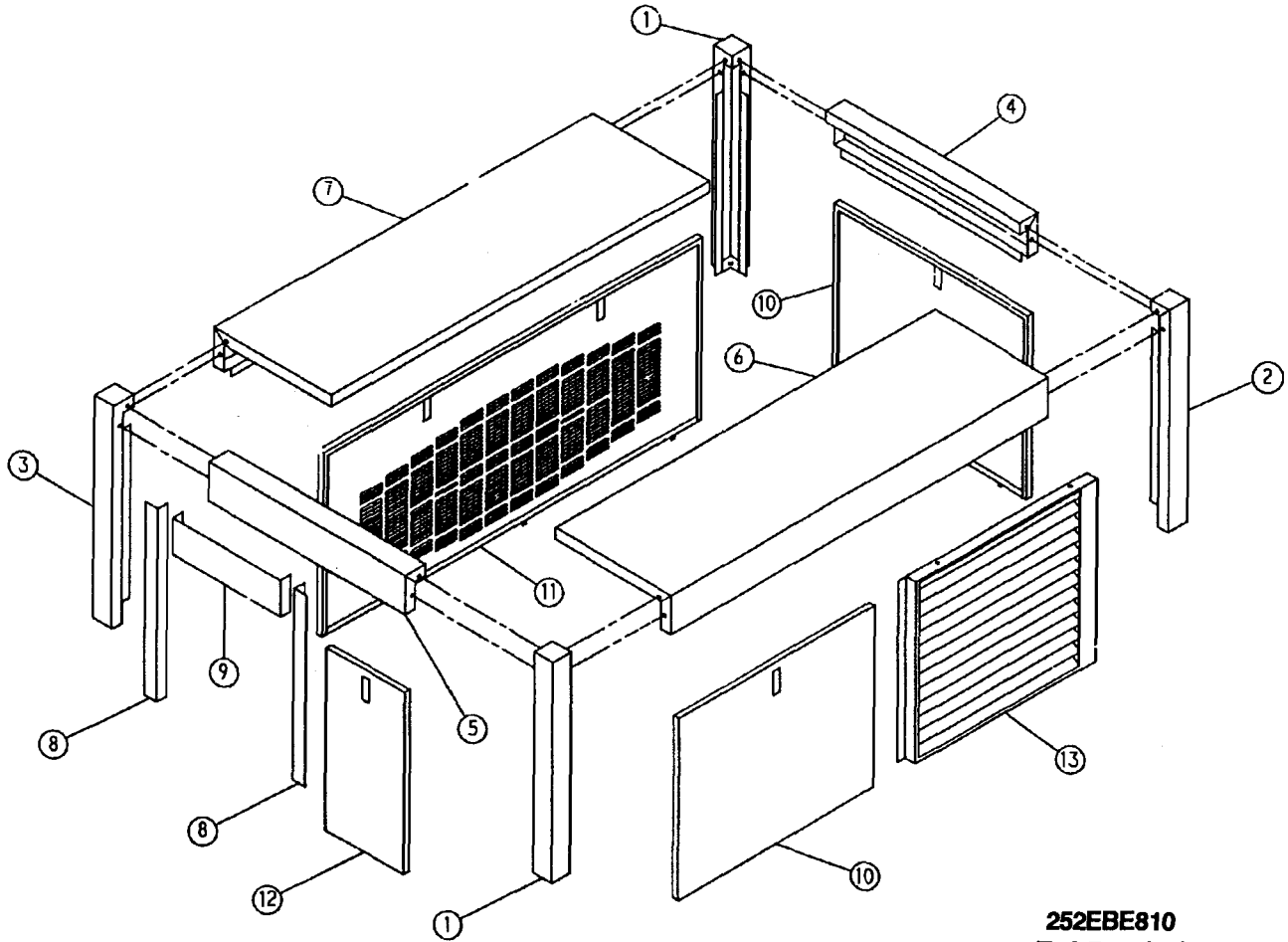
15	200	295EBE466	299EBE466	-----	-----	24CA3720	292AUX077	24CA3725	297AUX077
20	220	295EBE466	299EBE466	-----	-----	24CA2779	258AUX077	24CA3725	297AUX077
25	460	295EBE466	299EBE466	-----	-----	24CA2897	272AUX077	24CA3725	297AUX077
30	575	295EBE466	299EBE466	-----	-----	24CA3718	290AUX077	24CA3725	297AUX077

OVERLOAD RELAY HEATER CONVERSION LISTING

Refer To Motor Nameplate "Amperage" And Decal In Control Panel For Selection Of Overload Relay Heater Packs

CUTLER-HAMMER PART NUMBER	GARDNER-DENVER PART NUMBER
H2002A	24CA2479
H2003A	24CA2480
H2004A	24CA2481
H2005A	24CA2482
H2006A	24CA2483
H2007A	24CA2484
H2008A	24CA2485
H2009A	24CA2486
H2010A	24CA2487
H2011A	24CA2488
H2012A	24CA2603
H2013A	24CA2604
H2014A	24CA2605
H2015A	24CA2606
H2016A	24CA2607
H2017A	24CA2608
H2018	24CA2924
H2019	24CA2925
H2020	24CA2926
H2021	24CA2927
H2022	24CA2893
H2023	24CA2894
H2024	24CA2928

Order by Part Number and Description. Reference Numbers for your convenience only.



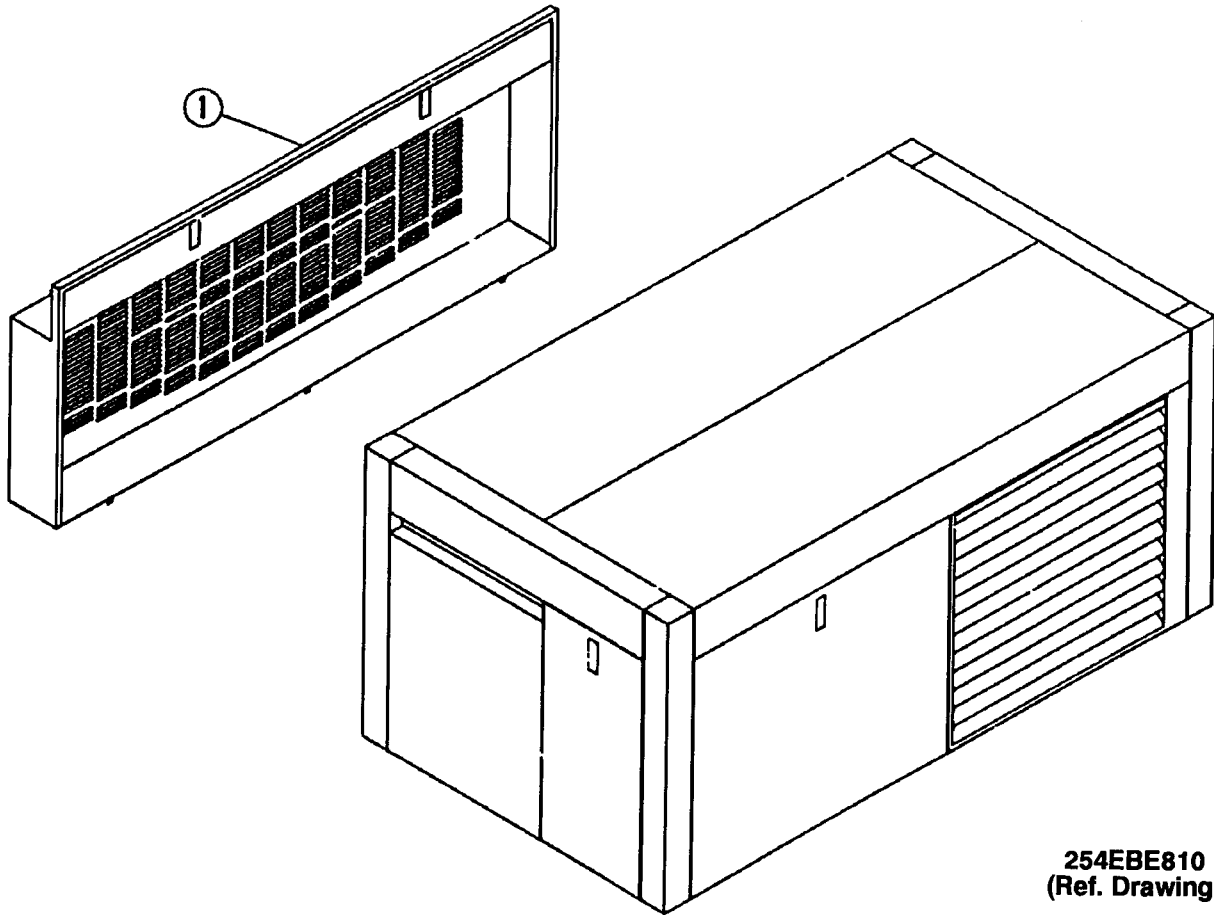
252EBE810
(Ref. Drawing)

ENCLOSURE - COMMON PARTS

Ref. No.	Name of Part	Qty.	Part No.
1	POST	2	200EBE313
2	POST	1	201EBE313
3	POST	1	202EBE313
4	FRAME.....	1	203EBE314
5	FRAME.....	1	204EBE314
6	FRAME.....	1	205EBE314
7	FRAME.....	1	206EBE314
8	BRACKET	2	201EBE142
9	BRACKET	1	202EBE142
10	PANEL	2	203EBE216
* 11	PANEL	1	204EBE216
12	PANEL.....	1	205EBE216
13	PANEL.....	1	206EBE216

* For use with ODP Motors only.

Order by Part Number and Description. Reference Numbers for your convenience only.

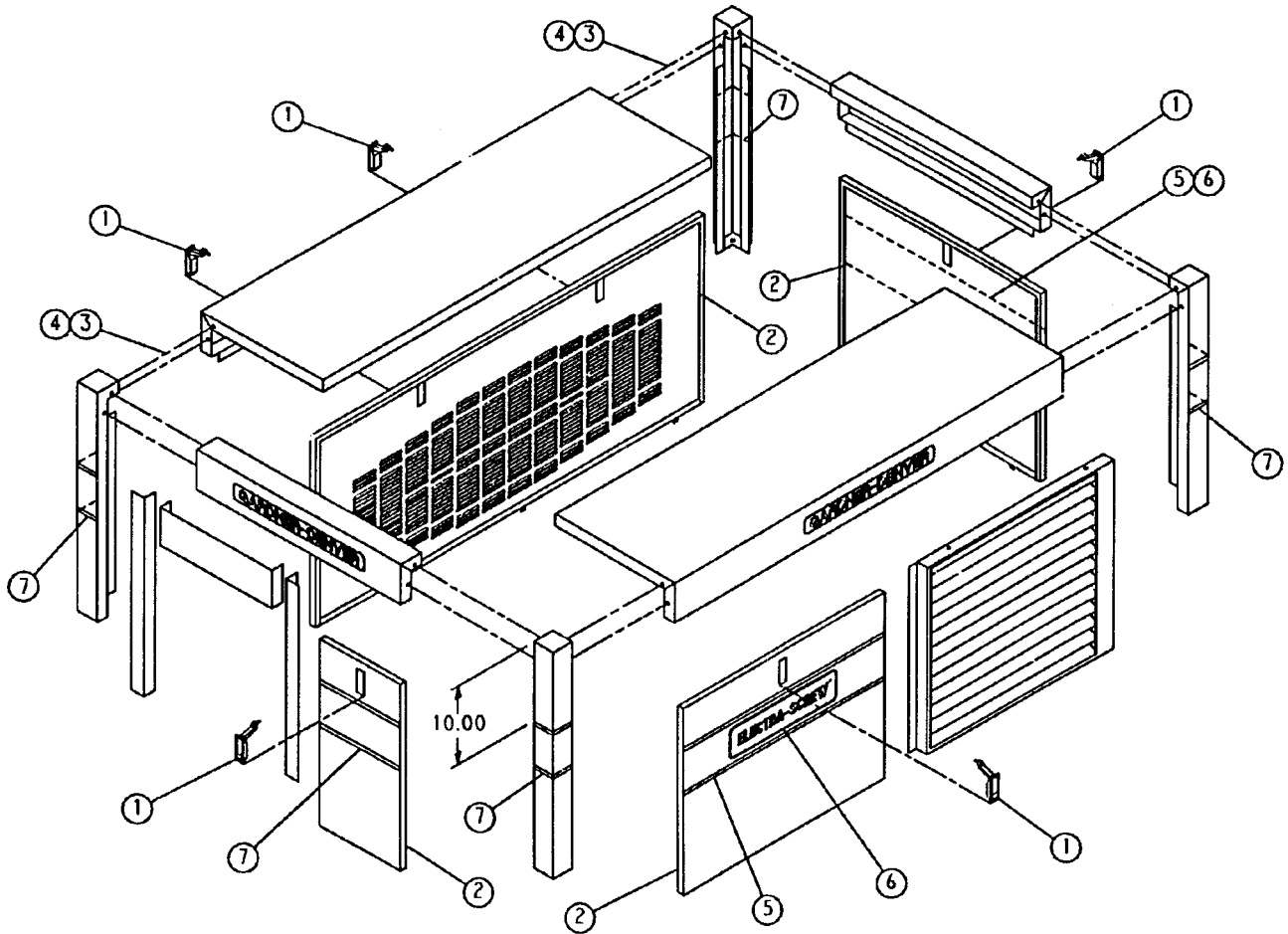


ENCLOSURE - TEFC MOTOR

Ref. No.	Name of Part	Qty.	Part No.
* 1	PANEL.....	1	207EBE216

* For use with TEFC Motors only.

Order by Part Number and Description. Reference Numbers for your convenience only.

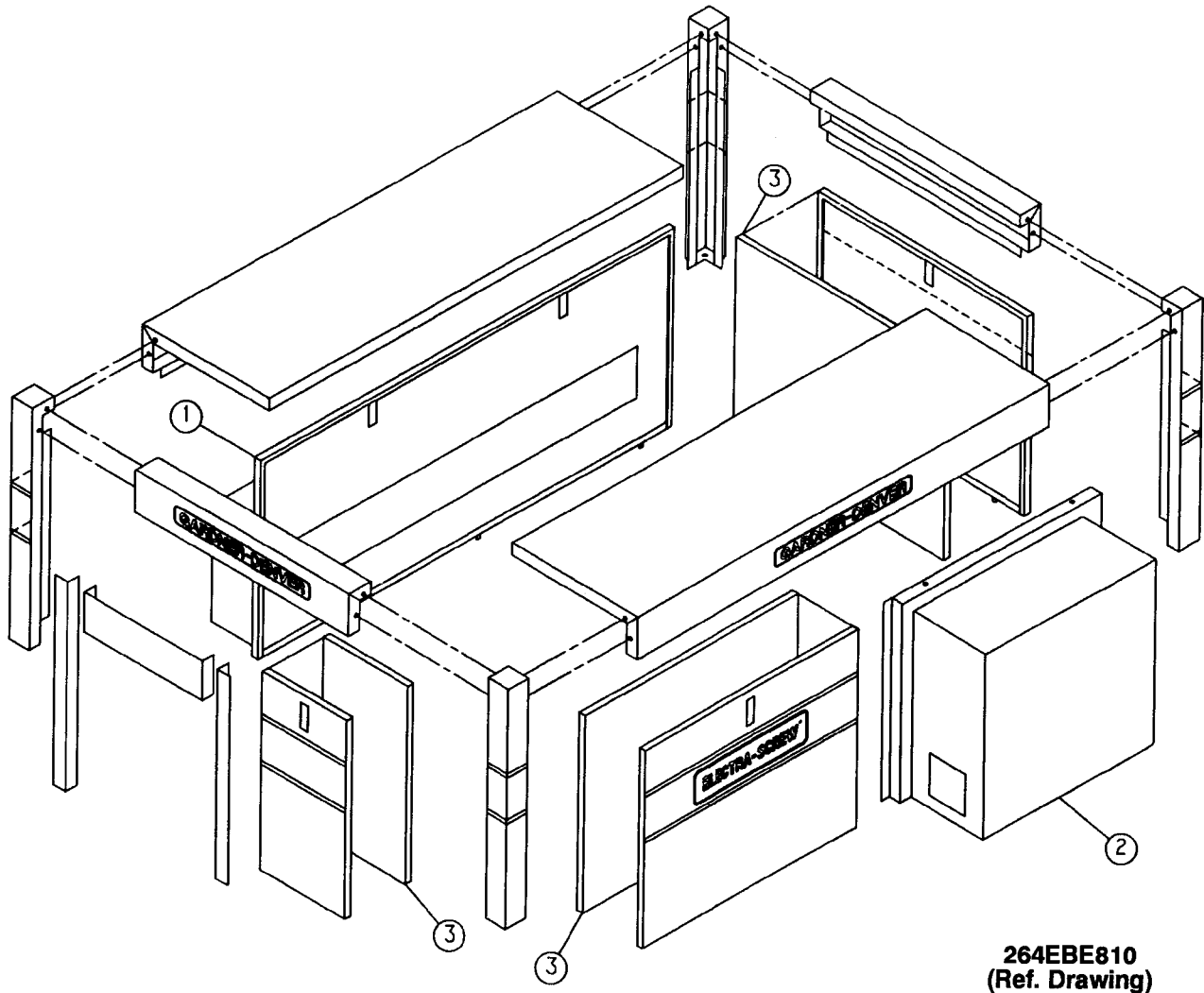


253EBE810
(Ref. Drawing)

ENCLOSURE - HARDWARE & MOUNTING

Ref. No.	Name of Part	Qty.	Part No.
1	LATCH.....	5	31D51
2	TRIM-SEAL.....	26	32E12
3	SCREW-FLANGED.....	40	75LM51
4	NUT-FLANGED.....	40	50AW5
5	DECAL.....	2	215ECM077
6	DECAL.....	2	214ECM077
7	DECAL.....	1	203ESO077

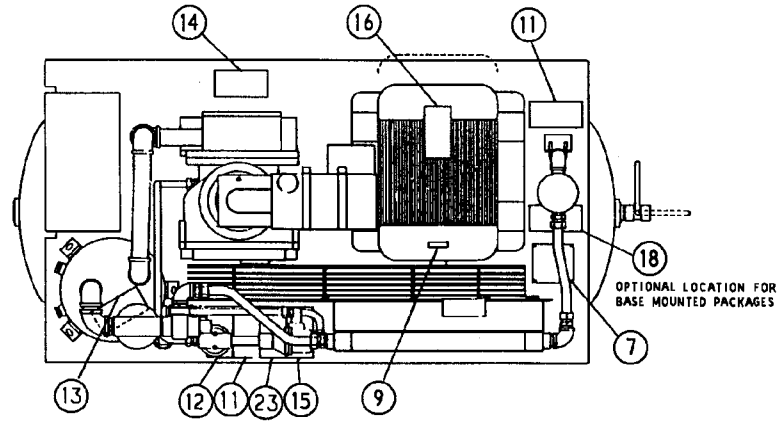
Order by Part Number and Description. Reference Numbers for your convenience only.



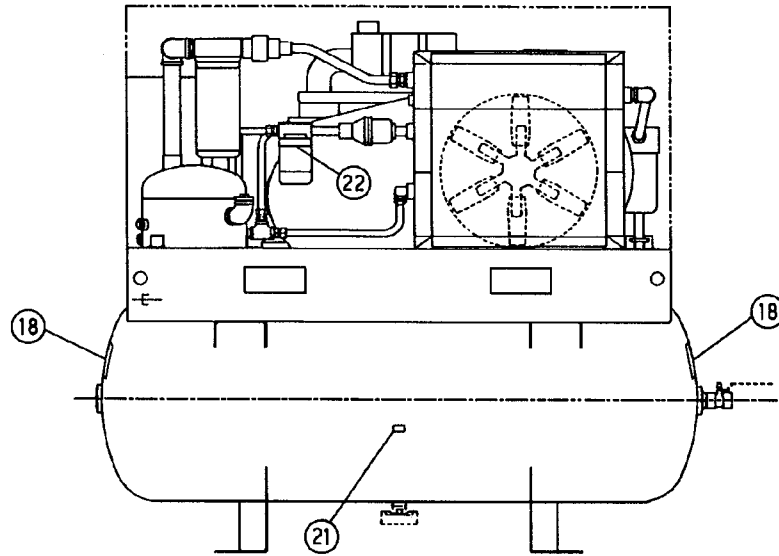
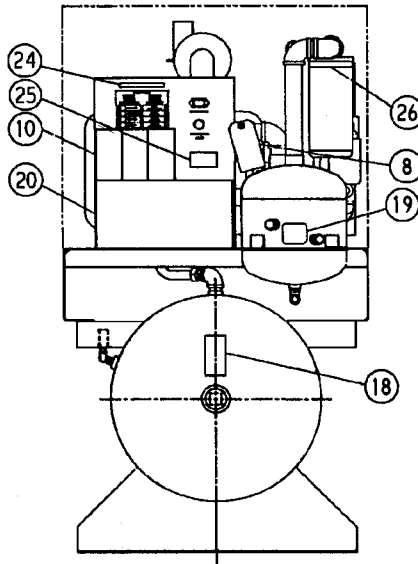
264EBE810
(Ref. Drawing)

QUIET ENCLOSURE (SPECIAL PARTS)

Ref. No.	Name of Part	Qty.	Part No.
1	BAFFLE	1	201EBE840
2	BAFFLE	1	202EBE840
3	INSULATION	1	200EJB470



266EBE810
(Ref. Drawing)



IDENTIFICATION AND INSTRUCTION GROUP

Ref. No.	Name of Part	Qty.	Part No.
* 1	DECAL, WARNING - SEE WIRING DIAGRAM.....	1	222EAQ077
* 2	DECAL, WARNING - ELECTRICAL SHOCK.....	1	216EAQ077
* 3	DECAL, PARTS LIST/SERVICE MANUAL #.....	1	204EDE077
* 4	DECAL, L1.....	1	236AUX077
* 5	DECAL, L2.....	1	237AUX077
* 6	DECAL, L3.....	1	238AUX077
7	RIVET.....	4	70E13
8	TAG-INSTRUCTION.....	1	201EAQ304
9	DECAL, ROTATION ARROW.....	1	204EBE077
10	DECAL, WARNING.....	1	227EAQ077
11	DECAL, DANGER - HOT OIL UNDER PRESSURE.....	2	212EAQ077
12	DECAL, AEON 4000 LUBRICANT.....	1	228EAQ077
13	DECAL, WARNING - INSPECT OIL RESERVOIR.....	1	217EAQ077
14	DECAL, DANGER - DO NOT MODIFY.....	1	218EAQ077
15	DECAL, WARNING - ROTATING MACHINERY.....	1	211EAQ077
16	DECAL, CAUTION - DO NOT LIFT.....	1	208EAQ077
** 17	DECAL, WARNING - AUTO RESTART.....	4	207EAQ077
18	DECAL, DANGER - DO NOT BREATHE.....	2	206EAQ077
19	DECAL, OIL LEVEL.....	1	200EJB077
20	DECAL, ID & INSTRUCTION.....	1	201EJB077
21	DECAL, DRAIN MOISTURE DAILY.....	1	205ESO077
22	DECAL, OIL FILTER ELEMENT.....	1	205EBE077
23	DECAL, NOTICE - USE G-D PARTS.....	1	214EAQ077
24	DECAL, AUTO SENTRY-S.....	1	206EJB077
25	NAMEPLATE.....	1	69F64
26	DECAL, OIL SEPARATOR CANISTER.....	1	211EBE077
* 27	DECAL, CAUTION - USE FLOOR PLATE.....	1	221EAQ077

* Not shown - Placement inside Control Box.
 ** Not shown

	OPEN DRIP-PROOF (60 HZ) (ODP)				HI-EFF. OPEN DRIP-PROOF (60 HZ) (ODP)				TOTALLY ENCLOSED FAN COOLED (60 HZ) (TEFC)			
	200V	230V	460V	575V	200V	230V	460V	575V	200V	230V	460V	575V
COL. OPT #	13-A	13-B	13-C	13-D	13-E	13-F	13-G	13-H	13-I	13-J	13-K	13-L
15 HP	24AW8	24AW24	24AW24	24AW43	24CA1489	24CA1509	24CA1509	24CA1536	24CA2385	24CA2386	24CA2386	24CA2387
20 HP	24AW9	24AW25	24AW25	24AW44	24CA1490	24CA1510	24CA1510	24CA1537	24CA2388	24CA2389	24CA2389	24CA2390
25 HP	24AW10	24AW26	24AW26	24AW45	24CA1491	24CA1511	24CA1511	24CA1538	24CA2391	24CA2392	24CA2392	24CA2393
30 HP	24AW11	24AW27	24AW27	24AW46	24CA1492	24CA1512	24CA1512	24CA1539	24CA2394	24CA2395	24CA2395	24CA2396

REPAIR KITS AND ACCESSORIES

Your Gardner-Denver rotary screw compressor is designed and manufactured for many years of reliable operation. All components are engineered to exacting specifications, which will function together as a system to provide maximum efficiency. To insure the continuing integrity of compressor operation, use only original quality genuine Gardner-Denver replacement parts and accessories.

Name of Part	Qty.	Part No.
ROUTINE MAINTENANCE KIT (3000 Hrs.), Heavy Duty Air Filter		EBE80665
ELEMENT, Air Filter	2	2116150
ELEMENT, Oil Filter	3	2116128
ROUTINE MAINTENANCE KIT (3000 Hrs.), Standard Air Filter		202EBE6013
ELEMENT, Air Filter	2	2116273
ELEMENT, Oil Filter	3	2116128
PERIODIC MAINTENANCE KIT (Inlet Valve)		204SSE6013
O-RING	1	25AM15
O-RING	1	25BC440
PERIODIC OVERHAUL KIT, Air End (See pages 4 and 7 for Parts Listing)		202SSE6013
OIL SEPARATOR ELEMENT	1	2116717
KIT, OIL SEAL	1	203SSE6013
OIL SEAL	1	60DD679
O-RING	1	54C210
OIL SEAL	1	60DD543
O-RING	1	25BC380
FIELD ENCLOSURE KIT (ODP Motor)	1	217EBE4017
FIELD ENCLOSURE KIT (TEFC Motor)	1	218EBE4017
QUIET ENCLOSURE KIT (ODP Motor Only) (Field Enclosure)	1	219EBE4023
ELECTRICAL CONTROL KIT		EJB81373
THERMISTOR PROBE	2	21D264
VALVE-SOLENOID	1	91B77
SWITCH-VACUUM	1	88H195
TRANSDUCER	2	88H198
PNEUMATIC CONTROL KIT		EJB81375
VALVE-SUBTRACTIVE PILOT	1	2009398
VALVE-SHUTTLE	1	90AR107
GASKET ELIMINATOR	1	25BC222
LUBRICANT (AEON 4000)		
5-GALLON PAIL	1	28H57
55-GALLON DRUM	1	28H36
TOUCH-UP PAINT, White		
5-GALLON PAIL	1	28H76
1-GALLON CAN	1	23H83
1-QUART CAN	1	23H84
WEAR SLEEVE INSTALLATION/REMOVAL KIT	1	SSE81282



COOPER

**Gardner-Denver
Industrial Machinery**

For additional information, contact Gardner-Denver Industrial Machinery
Division, 1800 Gardner Expressway, Quincy, Illinois 62305-4024
Telephone (217) 224-8800 FAX 217-224-7814 Telex 404332.

Specifications subject to change without notice.

COPYRIGHT © 1993 Cooper Industries, Inc.

Litho in USA.

2M-10-93